



QUILTCON[®]

presented by THE MODERN QUILT GUILD

FEBRUARY 16 - 20, 2022

PHOENIX CONVENTION CENTER | PHOENIX, AZ





The MQG is a nonprofit corporation with IRS 501(c)(3) status. The guild's mission is to encourage the growth and development of modern quilting through art, education, and community.

Contact Us

Event Questions, Registration – register@themodernquiltguild.com

Sponsorships, Vendors – amanda@themodernquiltguild.com

Volunteers – volunteers@themodernquiltguild.com

MQG Membership – info@themodernquiltguild.com

Press/Public Relations – info@themodernquiltguild.com

The Modern Quilt Guild Board of Directors

Heather Kinion, Chairperson, Region 3 Representative

Vikki Gray, Treasurer

Mary Anne Williams, Secretary, Region 2 Representative

Carol Cho

Aleeda Crawley

Vivika DeNegre

Greg Stewart, Region 1 Representative

Candy Parker, Region 4 Representative

Shruti Dandekar, Region 5 Representative

MQG Staff

Karen Cooper, Executive Director

Elizabeth Dackson, Director of Events

Amanda Hines Bernay, Director of Partnerships

Brenna Riley Gates, Communications Manager

Colleen Molen, Brand Manager

Jennifer Fisher, Office Manager

Volunteer Leaders

Megan Callahan, Registration Manager

Stephanie Johnson, Volunteer Coordinator

Kristyn Jansen, Volunteer Coordinator

CONTACT US	2
ABOUT QUILTCON	4
ABOUT PHOENIX	5
SAFETY AND ADA GUIDELINES	7
ABOUT THE SHOW	9
ADMISSION	14
WORKSHOPS AND LECTURES.....	16
TOP TIPS, RULES, AND CODE OF CONDUCT	18

REFUNDS, DISCOUNTS, AND CANCELLATIONS	20
REGISTRATION INFORMATION	21
QUILTCON SCHEDULE	22
LECTURE DESCRIPTIONS	27
WORKSHOP DESCRIPTIONS	37
FACULTY	66
COURSE INDEX BY INSTRUCTOR	72
COURSE INDEX BY CATEGORY..	76

Pricing, schedules, workshop descriptions, and content contained in this document are subject to change at any time. This program is only available in digital format; hard copies will not be printed.

Your participation and attendance, including family members and minors who accompany you, in any QuiltCon class, lecture, exhibit, or event — paid or unpaid — is conditioned upon your agreement to hereby indemnify QuiltCon, its employees, volunteers, and contractors from any claim for injury, loss, or damage caused by QuiltCon's negligence, strict liability, or for any other reason. Your online acceptance or signed class registration form is a binding agreement to this liability waiver. QuiltCon 2022 retains the right to cancel any workshop due to inadequate workshop enrollment, failure of teacher availability, or other circumstances beyond the control of QuiltCon.



ABOUT QUILTCON

QuiltCon is the conference and show by and for The Modern Quilt Guild. The only international modern quilting event of its kind, QuiltCon features top modern quilting instructors teaching hands-on workshops, a lecture hall, vendors, and exhibitors. It also includes a juried modern quilt show with thousands of dollars in cash prizes.

QuiltCon will be held February 16 - 20, 2022, at the Phoenix Convention Center in Phoenix, Arizona.

All QuiltCon 2022 events will take place in person.

For the latest information, please visit www.quiltcon.com

DATES AND HOURS

WEDNESDAY, FEB. 16

Welcome Mix and Mingle 4 - 7 p.m.

Awards Ceremony 7 - 8 p.m.

THURSDAY, FEB. 17

Quilt Show and Vendor Hall 10 a.m. - 6 p.m.

Workshops 9 a.m. - 9 p.m.

Lectures 9 a.m. - 6 p.m.

FRIDAY, FEB. 18

Quilt Show and Vendor Hall 10 a.m. - 6 p.m.

Workshops 9 a.m. - 9 p.m.

Lectures 9 a.m. - 6 p.m.

SATURDAY, FEB. 19

Quilt Show and Vendor Hall 10 a.m. - 6 p.m.

Workshops 9 a.m. - 9 p.m.

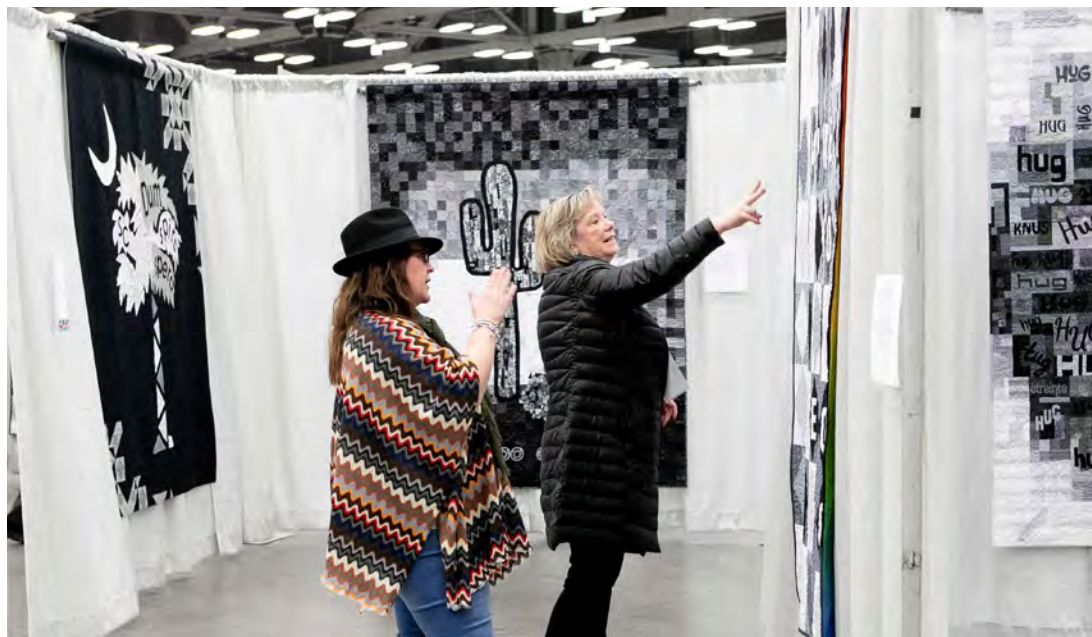
Lectures 9 a.m. - 7 p.m.

SUNDAY, FEB. 20

Quilt Show and Vendor Hall 10 a.m. - 4 p.m.

Workshops 9 a.m. - noon

Lectures 9 a.m. - 4 p.m.



ABOUT PHOENIX

Phoenix is the anchor of the Valley of the Sun, the 11th largest metropolitan area in the United States. Serene gardens, one-of-a-kind museums, award-winning dining, and more await you in Phoenix. The 50-acre desert garden showcase, the Desert Botanical Garden, features not only arid plants and delicate blooms but also hosts art installations among the flora. The Heard Museum, in the heart of downtown, tells the stories of the tradition, culture, and history of 22 regional American Indian tribes through art and cultural objects on exhibit. The Arts District on Roosevelt Row, just north of the convention center, is home to galleries, gorgeous murals, and a monthly art walk.

With a sprawling metropolitan area as well as mountains and the Sonoran Desert within a short drive of the downtown area, Phoenix has something for everyone.

Mother Nature smiles on some cities more than others. Phoenix is overflowing with sunshine most days, with an average of 300 sunny days per year. Skies stay blue throughout the winter months, with high temperatures reaching into the 60s and 70s. Desert nights and mornings can get chilly, but the temperature rarely drops below freezing.

The Phoenix Convention Center will be the home to QuiltCon 2022. Inspired by the red-rock walls and turquoise waters of the Grand Canyon, you'll find an unusually beautiful convention center in the middle of downtown Phoenix. Natural light streams in throughout the center. QuiltCon will be held in the North Building, a four-level structure that occupies an entire city block.



LAND ACKNOWLEDGEMENT

QuiltCon acknowledges our convention is held on the ancestral homelands stolen from Indigenous peoples, including the O'odham Jeweḍ, Akimel O'odham, Hohokam, their descendants who live currently, and future generations to come. We acknowledge the sovereignty of 22 Tribal Nations stewarding the lands that make up the current state of Arizona.

QuiltCon is dedicated to protecting and honoring the history of these people and places.

GETTING THERE



BY AIR

Phoenix is easily accessible through the Sky Harbor International Airport (PHX). Sky Harbor serves more than 120 domestic and international destinations with 1,200 daily flights. Located in the middle of Greater Phoenix, less than 10 minutes from downtown, Sky Harbor features two main domestic terminals with security wait times consistently updated on their website, www.skyharbor.com, to ease your travel stress. Complimentary wi-fi is offered throughout the Phoenix airport.

Convenient transportation to the airport is available by way of the [PHX Sky Train®](#). This driverless people-mover transports [Valley Metro Rail](#) passengers between the airport and the 44th Street/Washington Street station. Uber, Lyft, and taxi transportation are also available.

BY CAR

The Phoenix Convention Center has hourly and daily parking available with over 4,300 covered spots in multiple parking garages. The garage closest to the QuiltCon event space is the North Garage at 475 E Monroe Street.

The North Garage features 9 ADA spaces, the West Garage features 11 ADA spaces, and the East Garage features 68 spaces.

All of the Phoenix Convention Center garages, North, East, and West, allow you to prepay and reserve your spot in advance. No circling the levels, hunting for an open spot! Reserve your spot a rate of \$12 per day, in advance right here: <https://space.aceparking.com/pcc>

SAFETY GUIDELINES

As of the publishing date of this catalog, June 24, 2021, the Centers for Disease Control recommends that unvaccinated people wear masks in public settings, at events and gatherings, and anywhere they will be around other people. Many businesses are requiring face masks within their establishments as well. Also, please note that some businesses and public spaces are temporarily closed due to COVID-19, so be sure to verify hours of operation before visiting.

The Phoenix Convention Center is GBAC STAR accredited, which indicates that they have implemented rigorous protocols in response to bio-risk situations, specifically including the use of personal protective equipment, emergency preparedness, sterilization, and sanitization to provide clean environments to guests in the era of COVID-19.

In addition to cleaning measures, the Phoenix Convention Center has modified doors to stand open on their own to allow you to navigate through the facility without a touch. An automated parking access system has also been implemented to eliminate onsite person-to-person interactions and prevent unnecessary contact points.

Throughout the facility, you will see frequent reminders to wash hands and take protective measures. Hand sanitizer stations are present throughout the center. Signage will remind you to keep elevator capacity to just 3 individuals to promote safe physical distancing.

All seating areas will be configured to provide for adequate physical distancing as necessary at the time.

All QuiltCon workshop spaces will have shared tools and machines wiped down in between classes to provide the cleanest atmosphere possible and will also adhere to social distancing requirements and guidelines by the city of Phoenix, state of Arizona, and Centers for Disease Control.

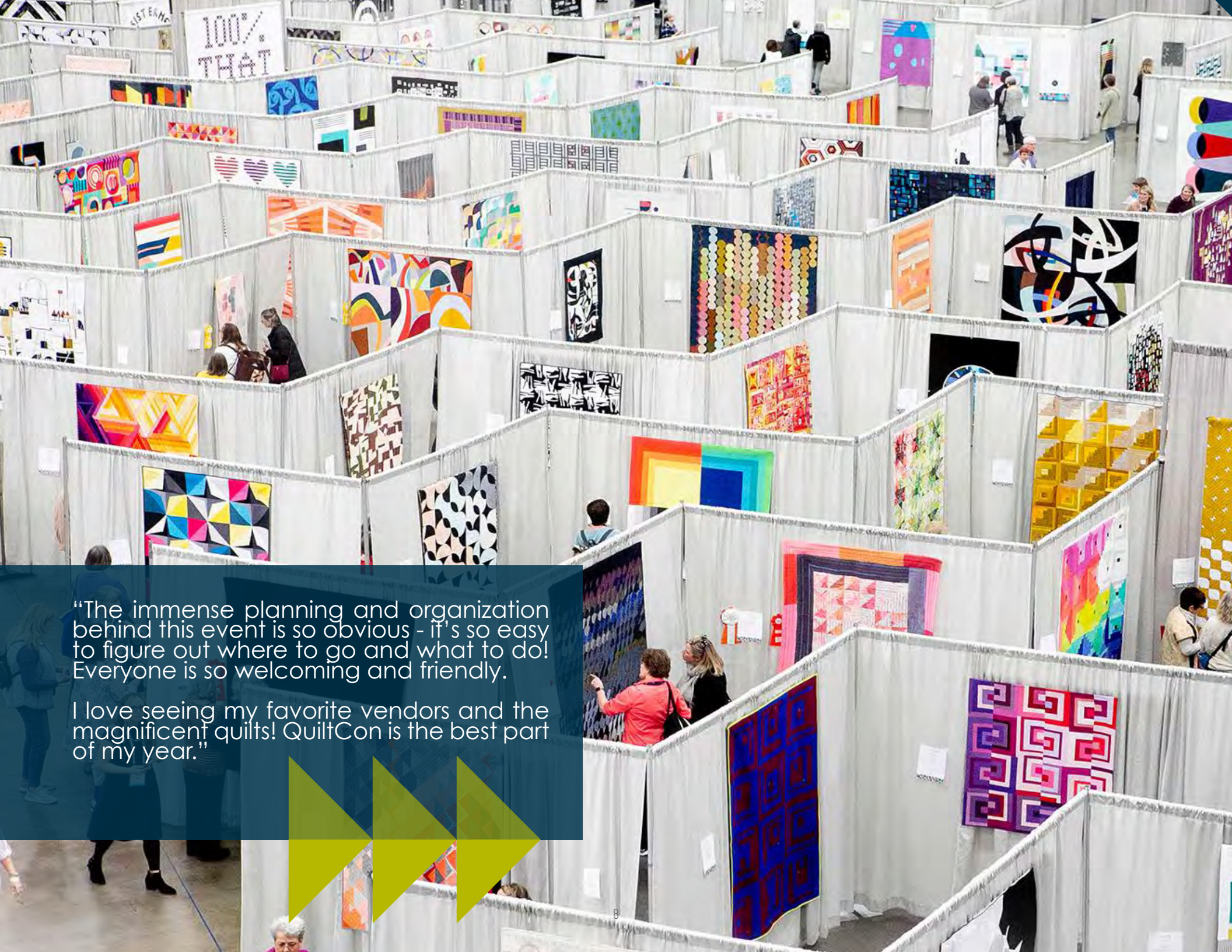


ADA COMPLIANCE

Reasonable ADA accommodations are available upon request through the registration system for registered attendees.

As QuiltCon attendees may experience multiple chemical sensitivities, please refrain from wearing all perfumes and use fragrance-free, unscented personal care products for the duration of our event.

**SAFETY
GUIDELINES,
ADA COMPLIANCE**



"The immense planning and organization behind this event is so obvious - it's so easy to figure out where to go and what to do! Everyone is so welcoming and friendly.

I love seeing my favorite vendors and the magnificent quilts! QuiltCon is the best part of my year."





ABOUT THE QUILT SHOW

QuiltCon is the only international juried competitive show for modern quilters.

Entries open September 1, 2021 and close on October 31, 2021.

Notifications will be sent by December 15, 2021. You must be a member of The Modern Quilt Guild to enter your quilt into the competition. Join [here](https://www.modernquiltguild.com/).

Review the complete rules and guidelines for entering at www.quiltcon.com/quilt-show.

Thousands of dollars in cash prizes will be awarded for:

- Best-in-Show: \$5,000 prize
- Quilting Excellence: \$1,000 prize
- Best Machine Quilting, Framed: \$1,000 prize
- Best Machine Quilting, Frameless: \$1,000 prize
- People's Choice: \$1,000 prize
- American Patchwork & Quilting Hexagon Challenge: \$1,350 in prizes
- Windham Artisan Cotton Fabric Challenge: \$1,350 in prizes
- Appliqué: \$850 in prizes
- Group or Bee Quilts: \$850 in prizes
- Handwork: \$850 in prizes
- Improvisation: \$850 in prizes
- Minimalist Design: \$850 in prizes
- Modern Traditionalism: \$850 in prizes
- Piecing: \$850 in prizes
- Small Quilts: \$850 in prizes
- Use of Negative Space: \$850 in prizes
- Youth (entrants must be 18 and under): \$850 in prizes

FEATURED PRESENTER: LATIFAH SAAFIR

FINDING MY CREATIVE IDENTITY: STANDING TALL AS A QUILTER

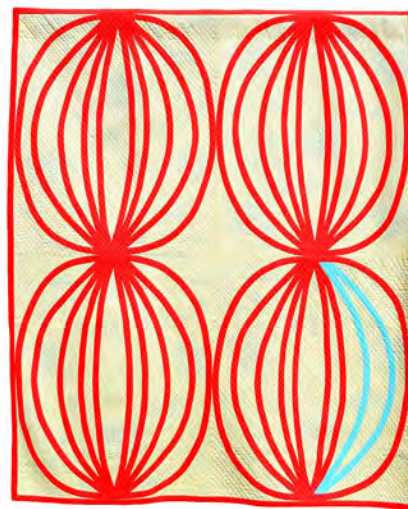
A quilter for over a decade and a sewist practically her whole life, Latifah Saafir has worn many hats. As one of the founders of The Modern Quilt Guild and the Los Angeles Modern Quilt Guild, Latifah has consistently focused on creating community. Latifah is widely known for her body of work that features glorious curves, clean lines, bright colors, and a quintessential modern aesthetic. Join Latifah as she talks about her journey as a creative, standing tall in your own voice, and the importance of creating inclusive spaces.

Featured Presentation Saturday, February 19, 12:15 p.m



THE QUILT ENGINEER: THE WORKS OF LATIFAH SAAFIR

This special exhibit features a snapshot of Latifah's work. Known for her bold and innovative modern quilts, Latifah combines her training as an engineer with her lifelong passion for sewing. Don't miss Latifah's designs that are graphic and contemporary, featuring challenging techniques with meticulous attention to detail.



INDIGENOUS QUILTMAKERS

Arizona is located on the ancestral homes of 22 American Indian tribes. QuiltCon is pleased to present select works of Indigenous Quiltmakers who are using their art to tell the stories of their ancestors. The exhibit includes the work of activist storyteller Susan Hudson, whose ledger quilts honor the past and are dedicated to the future.

SUSANNE WOODS PROJECT

Susanne Woods was an early advocate for and leader of the MQG. Serving on the board of directors for six years, in addition to her full-time publishing career, Susanne's guidance was invaluable. Like so many quilters, Susanne's passing in 2020 left stacks of projects unfinished. This exhibit features many of those quilts, which were lovingly finished by members of the local guild started by Susanne. Discover this sliver of Susanne's legacy, and the stories of finishing the quilts from her guild.

TEMPERATURE QUILTS

The Modern Quilt Guild has over 15,000 members in 39 countries around the world. Explore this fun exhibit using temperature quilts to visualize the varying climates in which our members live.

MQG 2021 QUILTS OF THE MONTH

Each quarter in the MQG Journal, Modern Quilt Guild members receive free patterns designed by members. Explore the 12 original quilt patterns from 2021 in this exhibit.

SJSA REMEMBRANCE PROJECT

The Social Justice Sewing Academy's Remembrance Project is a quilt block community art project honoring the lives of individuals who were murdered in a politically or racially motivated manner. Their names and identities live on in these banners, displayed to remind the world that their lives mattered. This special exhibit features banners made by members of the MQG.

QUILTCON TOGETHER HIGHLIGHTS

As a result of the global COVID-19 pandemic, QuiltCon was not held in person in 2021. A one-time virtual event, called QuiltCon Together, was held in its place. In this exhibit, several top quilts from that show will be displayed.

**SPECIAL
EXHIBITS**

GET INVOLVED

VOLUNTEER

Volunteering is a great way to fully experience QuiltCon, meet new people, and have fun! We have many returning volunteers every year, dedicating their hours over and over again because they have such a great time, but we are always happy to welcome new volunteers! Signups will begin in September

Find volunteer information and sign up for the volunteer newsletter to be notified when signups open at quiltcon.com/volunteer.



QUILTCON COMMUNITY OUTREACH QUILT CHALLENGE

The QuiltCon Community Outreach Quilt Challenge allows participating local MQG chapters and Individual Member Teams to work collaboratively to create quilts using a pre-determined color palette and focal design element. The quilts will be sewn in their entirety by each group, from design and piecing through quilting and binding, to produce complete twin sized quilts. After the quilts are exhibited at QuiltCon, groups will donate their quilts to a charity in their community.

This year, we are pleased to announce that participating groups will also have the opportunity to sell their community outreach quilt during QuiltCon to raise funds for the [Women of Color Quilters Network](#) and the [Navajo Quilt Project](#).

The design focus for this year's challenge is angles! Angles come in all shapes and sizes, with varying degrees. While some are more pointed, you can also find others that almost seem to flatten out. You'll find right angles in most quilts, so the challenge this year is to feature angles that are not 90° in your quilt. Acute or obtuse, let the angles be the focus of the quilt, instead of simply the place where blocks meet.

More information on the Community Outreach Quilt Challenge can be found on the website at quiltcon.com/community-challenge.



ADMISSION COSTS

LECTURES

Single Lecture Ticket	\$15 non-members, \$12.75 members
All-Access Lecture Pass	\$199 non-members, \$169.15 members (includes all lectures, Awards Ceremony, and Featured Presentation)
Thursday Lecture Pass	\$90 non-members, \$82.30 members (includes eight lectures)
Friday Lecture Pass	\$90 non-members, \$82.30 members (includes eight lectures)
Saturday Lecture Pass	\$75 non-members, \$62.50 members (includes Featured Presentation + six lectures)
Sunday Lecture Pass	\$50 non-members, \$40 members (includes five lectures)

WORKSHOPS

Six-Hour	\$202.50 non-members, \$162.50 members
Three-Hour	\$99 non-members, \$79.20 members
Longarm	\$149 non-members, \$129.20 members NEW THIS YEAR – Three-hour Longarm Intensive workshops will include personal access to a longarm machine for the duration of class! This will allow you as a student more practice time while also having more physical distance between students. You will benefit from more individual teacher time, as only 11 students will be permitted in each class!

SPECIAL EVENTS

Yoga Workshops	\$15 non-members, \$12.75 members
QuiltCon Awards Ceremony	\$15 non-members, free to members who register by November 30, 2021
Special Exhibit Tours	\$30 non-members and members
Demonstrations:	Included with show pass admission

SHOW PASSES

(includes admission to quilt show and vendor hall)
Four-Day Show Pass
\$36, free to members who register by November 30, 2021
One-Day Show Pass
\$12 non-members and members
NOTE: One-day show passes will be available starting December 2021

DEALS

- All MQG members who register by November 30, 2021 and select the four-day show pass with their registration will receive the pass for free.
- MQG member discounts are applied automatically in the registration system after you log in with your membership credentials.
- The first 1,000 members to complete a paid registration will receive a goodie bag onsite at the event!

No discounts are available for onsite registration or passes.

Join the MQG for early registration and discounts! www.themodernquiltguild.com/join



WORKSHOPS AND LECTURES

LECTURES

QuiltCon offers dozens of 45-minute lectures covering a wide variety of topics of interest to the modern quilter. The conference also features the awards ceremony and a featured presentation by Latifah Saafir.

For a complete schedule of lectures, see pages 27-36.



WORKSHOPS

QuiltCon workshops are hands-on courses. Participants may be required to bring supplies or purchase supplies from instructors. Sewing machines will be provided for all workshops that require use of a sewing machine. Limited irons, cutting mats, and rotary cutters will be provided in workshop rooms.

Six-hour workshops are six hours in length.

- 9 a.m. - 4:30 p.m. (ninety-minute lunch/lecture break from 12 - 1:30 p.m.)

Three-hour workshops are three hours in length.

- Morning workshops run from 9 a.m. - noon
- Afternoon workshops run from 1:30 - 4:30 p.m.
- Evening workshops run from 6 - 9 p.m.

Each workshop will have a supply list available for students to download from the QuiltCon website. Each student is responsible for downloading their supply lists. In addition to the supply lists provided by instructors, students should bring a basic sewing kit to each class that includes a quilting ruler, scissors, pins, and thread. If you would like your own cutting space, we recommend bringing a 12" x 12" cutting mat.

FEES

- Workshop prices are based on the duration of the class. We offer six-hour and three-hour workshops.
- No discounts are available for onsite registration or passes.

SUPPLY LISTS

- Workshop attendees can access supply lists after December 1st on the QuiltCon website. Some supplies are included in required material fees (see next section).

MATERIAL FEES

- Required materials fees for workshops are noted in the course descriptions and are separate from any course fees.
- Individual courses list what is included with the fee.
- Material fees are payable directly to the instructor at the start of class.
- QuiltCon cannot accept payments for material fees.

For a complete schedule of workshops, see pages 23-26.



TOP TIPS, RULES, AND CODE OF CONDUCT



TOP TIPS

- Use the hashtag #quiltcon on social media!
- As a registered attendee of QuiltCon, you will be receiving important registration communications via email. Please add register@themodernquiltguild.com to your Safe Sender list to ensure delivery of event confirmations, news, and special updates.
- Bag check is available for a small fee outside the QuiltCon quilt show/vendor hall for stowing items.
- Lost and Found is located at the registration desk.
- Gender-neutral restrooms are available at QuiltCon.
- Motorized scooters and/or wheelchairs can be rented onsite.

QUILTCON RULES

- Do not touch the quilts.
- Smoking is permitted in designated outdoor areas only.
- No food or drink in the QuiltCon quilt show/vendor hall.
- Rolling carts and luggage are prohibited in the QuiltCon vendor hall/quilt show; strollers, however, are allowed.

QUILTCON PHOTOGRAPHY POLICY

Friends and family want to see the cool things you saw at QuiltCon! Feel free to share your photos with them, inline with the following rules.

- Photography is permitted throughout the convention center.
- Photography in workshops and lectures is at the discretion of the instructor. Ask your instructor for permission to take photos of workshop quilts or instructional materials.
- When photographing a vendor booth, please first ask the vendor if they permit photography.
- Do not use photos for commercial purposes.
- Please disable any services on photography sharing websites that would permit viewers to order goods with the image printed on it.
- When posting photos of quilts on your blog or social media, please credit the quilt maker. Tip: take a picture of the quilt signage so you have all the information at your fingertips!

QUILTCON VIDEO POLICY

- Do not use videos for commercial purposes.
- Permission from faculty must be obtained before filming any workshops/lectures. We strongly recommend getting written permission in advance.
- Video of workshops/lectures cannot be posted online without the express written permission of the faculty member and QuiltCon. This includes all video such as TikTok, YouTube, Vimeo, Facebook, Instagram, etc.
- You may shoot video of the quilts in the quilt show. Please be sure to provide credit to the maker.
- Ask permission before filming vendor/exhibitor booths.
- Approved press must follow the press guidelines from QuiltCon regarding video and must always be wearing a QuiltCon press pass while filming.

QUILTCON FAMILY POLICY

- Supervised children of all ages are welcome on the show floor. A show pass is required for children over age 10.
- Children over the age of 10 are permitted in the lecture hall with a purchased pass.
- Babes-in-arms are welcome in the lecture hall at no additional cost.

WORKSHOP GUIDELINES

- Please silence your cell phones and other electronic devices.
- Bring required materials, cut and prepared as stated in the workshop supply list.
- Supply lists will be available online to download after December 1, 2021.
- If you forget something, remember the vendors will likely have what you need!
- All quilts, handouts, and other class materials shared by the instructor are the copyright of the instructor.
- If the workshop is not what you thought it would be, please try to enjoy learning a new skill or technique and stay for the duration of the session.

CODE OF CONDUCT

QuiltCon is dedicated to providing a fun, safe, and harassment-free event for all. All participants must abide the MQG's Community Guidelines.

In order to ensure a safe environment for everyone, all attendees, speakers, sponsors, and volunteers at MQG events are expected to:

- Act with kindness, fairness, honesty, integrity, and openness
- Respect the differing viewpoints of others and offer critiques or opinions with respect
- Treat all with equality and dignity, as they would wish to be treated.
- Provide a healthy environment for the exchange of ideas
- Be inclusive - go out of your way to be inviting and welcoming to others, especially those you don't know as well
- Encourage and support other members of our community
- Be proactive in educating yourself about diversity topics - if there are any terms or concepts in these guidelines that are unfamiliar to you, go to an internet search engine and look them up! Try searching for "diversity and inclusion" and see what you find. There are many great resources and the more you research these issues, the easier it will be to identify appropriate behaviors.

You can read the full guidelines at quiltcon.com/code-of-conduct



REFUNDS, DISCOUNTS, AND CANCELLATIONS

REFUNDS AND CANCELLATION POLICY

Refunds will be processed based on the date of your cancellation. No same-day payments/refunds will be processed. Refunds are only available 24 hours or more after the original purchase.

If you cancel between:

August 5 – August 31: 95% refund
September 1 – September 30: 80% refund
October 1 – October 31: 70% refund
November 1 – December 31: 50% refund
January 1, 2022 and beyond: No refunds are available

The cancellation fees above apply to cancelling all or part of your registration.

TRANSFERS

You can transfer part or all of your registration for a \$50 fee per transfer recipient. QuiltCon will not refund the money you paid for the workshop; however, you may work out payment arrangements directly with the person to whom you're transferring your registration to. Please note that no transfers can be performed after January 15, 2022.

DISCOUNTS

No discounts are available for onsite registration or passes.

Free admission for members requires registration for the four-day show pass and awards ceremony by November 30, 2021. After this date, registrations for these items by members will be charged the non-member rate.

Only four-day show passes will be available when registration opens. Four-day show passes are free for members with registration through November 30, 2021. One-day show tickets will be available starting in December 2021 and will not be eligible for member discounts.

CUSTOMER SATISFACTION POLICY

If you are not satisfied with a workshop, please visit the registration desk after the session is completed to fill out a formal complaint form. This form must be filled out within 24 hours of the session to be considered. If we receive five or more formal complaint forms for one workshop, we will issue refunds to the people who complained no later than March 30, 2022.

REGISTRATION INFORMATION

ALL QUILTCON ACTIVITIES WILL TAKE PLACE AT THE PHOENIX CONVENTION CENTER, LOCATED AT 100 THIRD STREET, PHOENIX, ARIZONA, 85004.

HOW TO REGISTER

Registration for QuiltCon will be offered online only. Refer to the dates below for details about when you can register.

PAYMENT

Visa, MasterCard, Amex, or Discover will be accepted.

CONFIRMATION

Your QuiltCon registration will be confirmed via email within 48 hours of payment. You will receive detailed workshop supply information December 1, 2021.

IMPORTANT DATES

- Registration for MQG Members opens on August 4, 2021 at 10 a.m. EDT.
- Registration for Non-Members opens on August 19, 2021 at 10 a.m. EDT.
- Onsite enrollments: If space is still available, workshop and lecture passes can be purchased onsite during QuiltCon. Please monitor our website prior to the event to see if workshops and lecture passes will be available for purchase at the event. There are no discounts available for purchases onsite.

Use the worksheet on page 22 to jot down your preferred workshops prior to starting online registration to save you time, as workshops tend to sell out quickly!



FULL SCHEDULE

Educational offerings at QuiltCon fall into one of the following categories. Each course will begin with an alpha code designating the category.

Courses that are only taught once will have the alpha code followed by a number. If the course is offered multiple times, that number will be followed by a day and time (e.g., ThuAM would be a Thursday morning class).

NOTE: Courses taught multiple times are not multi-part classes you must register for multiple sessions of, they are the same course taught on different days and times. Please only register for one session.

All times listed on the schedule are Arizona local time.

Code	Description
APP	Appliqué
DES	Design
DSMQ	Domestic Machine Quilting
EMB	Embroidery
FDP	Foundation Paper Piecing
FIN	Finishing
IMP	Improvitational Piecing/Design
LE	Lecture
MSC	Miscellaneous Topics
PIE	Piecing
QHA	Quilting by Hand
QLA	Quilting on a Longarm
QP	Quilting Planning
TOUR	Exhibit Tours
YO	Yoga

WORKSHOP NUMBER	TITLE	INSTRUCTOR	DATE/TIME

7:30 a.m. Morning 9 a.m.

Afternoon 1:30 p.m.

Evening 6 p.m.

THURSDAY

Lectures (see full lecture schedule on page 29)			
Demonstrations			
TOURThu Exhibit Tour	Quilt Show and Vendor Hall		
YOTu Yoga	DES001ThuAM Quilt Design with Origami Paper Collage Brigit Dermott	DES003ThuPM Beginning Procreate Quilt Design Steph Skardal	DES003ThuEve Beginning Procreate Quilt Design Steph Skardal
	DES002ThuAM EQ8 for Beginners Cheryl Brickey	DSMQ002ThuPM Matchstick Quilting Cassandra Beaver	DES004ThuEve Drafting Abstract Geometric Quilts Audrey Esarey
	DSMQ001 Clambake: A Ruler Quilting Design Feast Geraldine Wilkins		DSMQ002ThuEve Matchstick Quilting Cassandra Beaver
	EMB001ThuAM Just One Word: Dimensional Appliqué Embroidery Betz White	FDP008ThuPM Fussy Cutting for EPP Brimfield Awakening	DSMQ003ThuEve Quilted Compositions Christina Cameli
	FDP002 Portraiture in FPP Angela Bowman		EMB001ThuEve Just One Word: Dimensional Appliqué Embroidery Betz White
	IMP001 Improv Wholecloth Quilt Jodi Robinson		FDP003ThuEve Piecing with Templates Melissa de Leon Mason
	IMP002ThuAM Mini Mid-Mod Quilts David Owen Hastings	IMP002ThuPM Mini Mid-Mod Quilts David Owen Hastings	FDP008ThuEve Fussy Cutting for EPP Brimfield Awakening
	IMP003 Field of Jeans Sherri Lynn Wood		FDP009ThuEve Take On FPP with the NY Beauty Brigit Dermott
	PIE001 Make It Again Carolyn Friedlander		FIN001 All About Binding Sue Bouchard
	PIE002ThuAM Pleating Heidi Parkes	IMP004ThuPM Patchwork Sashiko Diana Fitzgerald	IMP004ThuEve Patchwork Sashiko Diana Fitzgerald
	PIE003 Machine-Pieced Double Wedding Ring Tara Faughnan		IMP005ThuEve Log Cabin Circles Maria Shell
	PIE004ThuAM Woven Rings: Exploring Curvy Partial Seams Tighe Flanagan	MSC001ThuPM Quilt Photography from Every Angle Kitty Wilkin	MSC002 Craftivism: Crafting for Impact Shannon Downey
	PIE012 Big-Impact Piecing: Glare Latifah Saafir		PIE004ThuEve Woven Rings: Exploring Curvy Partial Seams Tighe Flanagan
	QHA001Fri Sashiko: Core & Essence Atsushi Futatsuya		QP001 How to Make a Quilting Plan Christa Watson
	QLA001ThuAM Quilting the Grid Joanna Marsh	QLA002ThuPM Graffiti Quilting Karlee Porter	QLA004 Feathers & Vines Tia Curtis
	QLA002ThuAM Graffiti Quilting Karlee Porter	QLA003ThuPM Ghost Shapes Joanna Marsh	QLA002ThuEve Graffiti Quilting Karlee Porter

7:30 a.m. Morning 9 a.m.

Afternoon 1:30 p.m.

Evening 6 p.m.

FRIDAY

Lectures (see full lecture schedule on page 29)		
Demonstrations		
TOURFri Exhibit Tour	Quilt Show and Vendor Hall	
YOFri Yoga	APP100 Accents and Needle-turn Appliqué with Bow Carolyn Friedlander	
	DES006FriAM Quilting with Gradients Melissa de Leon Mason	DES008 Modern Quilt Design using EQ8 Cheryl Brickey
	DES007 All About Using Fabrics in EQ8 Cheryl Brickey	IMP008 Pebble Pop Improv Daisy Aschehoug
	DSMQ004 Power Curves: Serpentine Ruler Designs Geraldine Wilkins	
	EMB002FriAM Woven Embroidery Sampler Blair Stocker	MSC001FriPM Quilt Photography from Every Angle Kitty Wilkin
	FDP004 Brimfield Meadows Brimfield Awakening	DSMQ005 Quilting Between the Lines: Walking Foot Christa Watson
	IMP006 Bits & Pieces Improv Maria Shell	DSMQ006 Alt Grids for FMQ Christina Cameli
	IMP007 Modern Abstract Quilts David Owen Hastings	DSMQ007FriEve Scrappy QAYG Tia Curtis
	MSC003Fri Kick-Start Your Quilt Coat Eliane Bergmann	EMB003FriEve Snowflake Embroidered Gingham Star Blair Stocker
	PIE005FriAM Playing with Partial Seams Yvonne Fuchs	FDP005FriEve FPP Bootcamp Melissa de Leon Mason
	PIE006 Giant Nested Curves Daisy Aschehoug	IMP009FriEve Stepping Into Improv Laura Loewen
	PIE013 Otherside: Making Friends with Half-Rectangle Triangles Latifah Saafir	MSC004FriEve Zipping Through A Quilted Pouch Tina Curtis
	QHA001Fri Sashiko: Core & Essence Atsushi Futatsuya	PIE002FriEve Pleating Heidi Parkes
	QHA002FriAM Tied, Tufted & Tacked Sherri Lynn Wood	PIE007 Modern Strip Piecing Cheryl Brickey
	QLA005FriAM Free-Motion Fillers Karlee Porter	QLA005FriEve Free-Motion Fillers Karlee Porter
	QLA006FriAM Gridwork Reimagined Jodi Robinson	QLA007 Rulerwork Elevated Jodi Robinson

7:30 a.m. Morning 9 a.m.

Afternoon 1:30 p.m.

Evening 6 p.m.

SATURDAY

Lectures (see full lecture schedule on page 29)			
Demonstrations			
TOURSat Exhibit Tour	Quilt Show and Vendor Hall		
YOSat Yoga	DES006SatAM Quilting with Gradients Melissa de Leon Mason	DES013SatPM Activist Quilting Sara Trail	DES002SatEve EQ8 for Beginners Cheryl Brickey
	DES011 Exploring Value in the Hourglass Quilt Tara Faughnan		DES009SatEve Learn To Design Pixel Quilt Blocks Kerry Goulder
	DES012SatAM Intermediate Procreate Quilt Design Steph Skardal	DES014SatPM Quilt Your Life: Plan for Success Kitty Wilkin	DES012SatEve Intermediate Procreate Quilt Design Steph Skardal
	DSMQ008SatAM Graffiti Quilting on a Domestic Machine Karlee Porter	DSMQ008SatPM Graffiti Quilting on a Domestic Machine Karlee Porter	DES013SatEve Activist Quilting Sara Trail
	FDP006 Mastering Foundation Paper Piecing Veruschka Zarate		DSMQ009 FMQ Fluidity Christina Cameli
	IMP010 Swoopies Daisy Aschehoug		DSMQ010 Quilting Between the Lines: Free Motion Christa Watson
	MSC003Sat Kick-Start Your Quilt Coat Eliane Bergmann		DSMQ011 Going in Circles: A Ruler-Quilting Compass Geraldine Wilkins
	MSC005 Craftivism Intensive: Crafting Change Shannon Downey		EMB002SatEve Woven Embroidery Sampler Blair Stocker
	MSC006 Anastasia Patchwork Bag Diana Fitzgerald		EMB004SatEve Elevating Patchwork with Hand Embroidery Betz White
	PIE008 Quilt by Hand: Start to Finish Riane Menardi Morrison		FDP003SatEve Piecing with Templates Melissa de Leon Mason
	PIE009 Mastering Precision Curves: Sesen Yvonne Fuchs		FDP007 Irregular FPP Shapes Cassandra Beaver
	QHA003SatAM Hand Accented Cassandra Beaver	QP002SatPM Quilting Strategy Carolyn Friedlander	FDP009SatEve Take On FPP with the NY Beauty Britt Dermott
	QHA004 Improv Hand Quilting Heidi Parkes		IMP005SatEve Log Cabin Circles Maria Shell
	QHA005 Sashiko: Application & Practice Atsushi Futatsuya		QP002SatEve Quilting Strategy Carolyn Friedlander
	QLA001SatAM Quilting the Grid Joanna Marsh	QLA003SatPM Ghost Shapes Joanna Marsh	QLA009SatEve Feathers & Flourishes Karlee Porter
	QLA008SatAM Modern Textures Tia Curtis	QLA008SatPM Modern Textures Tia Curtis	

7:30 a.m. Morning 9 a.m.

Afternoon 1:30 p.m.

SUNDAY

	Lectures (see full lecture schedule on page 29)	
	Demonstrations	
TOURSun Exhibit Tour	Quilt Show and Vendor Hall	
YOSun Yoga	DES001Sun Quilt Design with Origami Paper Collage Brigit Dermott	
	DES005 Illustrator for Quilt Design Joanna Marsh	
	DES010Sun Creating Color Palettes Tara Faughnan	
	DES013Sun Activist Quilting Sara Trail	
	DES014Sun Quilt Your Life: Plan for Success Kitty Wilkin	
	DSMQ003Sun Quilted Compositions Christina Cameli	
	DSMQ007Sun Scrappy QAYG Tia Curtis	
	EMB003Sun Snowflake Embroidered Gingham Star Blair Stocker	
	FDP005Sun FPP Bootcamp Melissa de Leon Mason	
	IMP009Sun Stepping Into Improv Laura Loewen	
	MSC004Sun Zipping Through A Quilted Pouch Tina Curtis	
	PIE010 Happy Mail: Quilted Fabric Postcards Sarah Ruiz	
	PIE011 Exploring Curves Audrey Esarey	
	QHA006 Handwork Revisited Heidi Parkes	
	QLA006Sun Gridwork Reimagined Jodi Robinson	
	QLA009Sun Feathers & Flourishes Karlee Porter	

DESCRIPTIONS

AWARDS CEREMONY

LEAWA Wednesday, February 16, 7 p.m.

Before you get a chance to see the gorgeous quilts in the show, be sure to attend the Awards Ceremony. Find out who wins each of the different show categories and get a sneak peek at many of the best quilts QuiltCon has to offer! New this year, door prizes will be given to attendees throughout the ceremony (must be present to win). Wear your quilty best - this is a great time to show off that quilted coat or me-made top that you're so proud of!

DAILY YOGA

Heidi Parkes

YOThu Thursday, February 17, 7:30 a.m.

YOFri Friday, February 18, 7:30 a.m.

YOSat Saturday, February 19, 7:30 a.m.

YOSun Sunday, February 20, 7:30 a.m.

Join quilter and yoga instructor Heidi Parkes for a yoga flow practice. This will feel like a 'regular' yoga class, but it will be specially tailored to quilters. To ease our shoulders, there will be minimal downward facing dog. There will be additional gentle movements for our wrists and hands. In connection with the nature of our conference, necks, feet, and low backs will also be highlighted in class. Each of the four morning classes will be unique from one another. Students may want to bring a yoga mat, or may be content to practice on a towel from their hotel. Heidi will demonstrate the movements of the yoga class while teaching. The poses will be explained, but some familiarity with yoga is suggested, as the class will move at a flowing pace.

SPECIAL EXHIBIT TOURS

TOURThu Thursday, February 17, 9 a.m.

TOURFri Friday, February 18, 9 a.m.

TOURSat Saturday, February 19, 9 a.m.

TOURSun Sunday, February 20, 9 a.m.

Each morning before the exhibit hall opens to the public, quilt enthusiast Mary Fons will lead a private tour of the special exhibits. Mary will discuss overall design, modern quilting aesthetics, insights into how quilts were constructed, and so much more. Susan Hudson, Navajo quilter and curator of the Indigenous Quiltmakers special exhibit, will join the tours to discuss the works on display and the ancestral connections throughout. Pre-registration required. Tickets are available for each day's tour for \$30 and typically sell out quickly, so register early!

STASHED!

Cassandra Beaver

If you have been a quilter for very long, there is a good chance that you have a stash of fabric somewhere in your sewing space. Over time, many quilters start to see their stash as a source of guilt. Cassandra likes to look at her fabric stash as a source of inspiration, and she wants you to see yours that way too! She will identify and discuss quilting styles and how that relates to building a working palette of fabric. This is not a class that pressures you to get rid of fabric you love or offers dozens of projects to quickly use up your stash. Instead, this is about building a functional and inspiring collection of fabrics that works with how you quilt!

LE01 Thursday, February 17, 9 a.m.

INDIGENOUS QUILTMAKERS: HONORING OUR ANCESTORS

Susan Hudson

As QuiltCon 2022 heads to Arizona, there's no way to discount the rich history of textiles in Native American culture. In the QuiltCon special exhibit, Indigenous Quiltmakers, activism and art go hand in hand with a new chapter of these textile traditions. Listen to exhibit curator Susan Hudson as she discusses the pieces featured in the exhibit which honor the heritage and experiences of American Indian tribes, as well as look to their future.

LE02 Thursday, February 17, 10:15 a.m.



REDEFINING PERFECT

LE03 Thursday, February 17, 11:30 a.m.

Jessica Plunkett

Have you ever caught yourself admiring a “perfect” quilt? Have you ever set an expectation for yourself that doesn’t match your actual goal in making the project? Jessica will help us work together to determine how success is defined for our quilts and to redefine (or rename) a “perfect” quilt.

QUILTS ON THE RUNWAY: A HISTORY

LE04 Thursday, February 17, 12:45 p.m.

Mary Fons

Vintage quilts have been flooding the market lately — as clothing. Social media feeds and fashion magazines are saturated with ads for garments made by designers like Emily Bode, who cuts up vintage quilts to use as material to make high-priced coats, shirts, and pants. Bode gets credit for starting the trend, but she only revived it. As early as the 1960s, fashion designers such as Adolfo, Yves Saint Laurent, Ralph Lauren, Laura Ashley, and Calvin Klein, as well as fashion icons like Gloria Vanderbilt, saw that old quilts could be brilliant in the world of high fashion — and the shredding began. This brand-new lecture from popular QuiltCon speaker and quilt nerd Mary Fons will explore the culture of quilts on the runway (and in fashion photography) and examine what it all means. Is it okay to cut up quilts to make clothes? If so, which ones? If not, why not? This is one of Mary’s very favorite topics in the realm of American quilt culture, so prepare to have a fabulous time, darling.

HELLO MODERN ART, MEET ANTIQUE QUILTS

LE05 Thursday, February 17, 2 p.m.

Teresa Duryea Wong

Mid-century modern artists are widely cited as innovators who forged new ground in art history and created entirely new genres of art. The majority of those who succeeded and became well-known were male and mostly concentrated in New York and Europe. Their ideas, and their art, are seen as inventive and completely original. However, some elements of this new graphic style of contemporary art created during the middle of the 20th century are most certainly inspired by quilt art from the previous 100 years. Even if the artists were unaware of antique quilts, there is substantial evidence to show their influence was profound. Teresa will dissect the art created by quiltmakers a century ago and how their designs, patterns, and colors forged new ground in fine art design, yet their voices and art were completely ignored by the art establishment.

WELLNESS FOR QUILTERS

LE06 Thursday, February 17, 3:15 p.m.

Heidi Parkes

This empowering lecture will begin with tips on physical wellness during quilting and restorative practices for after quilting. Heidi will guide you through a live five-minute hand yoga practice and will introduce many of her favorite tools. Then she will dive into emotional wellness, including the ways that quilting can be therapeutic for the maker, as well as ways to care for our fellow makers and the people around us. Finally, she will explore ways that quilters can be conscientious in their intake and waste as it affects the environment and economic systems, creating wellness for the planet. This holistic talk about wellness will leave you and those around you feeling refreshed, with many practical tips that you can put into practice right away. This advice for body, mind, and planet will apply to machine and hand quilters alike.

PANEL DISCUSSION: VALUING OUR WORK

LE07 Thursday, February 17, 4:30 p.m.

Ever thought about selling a quilt? Ever sold a quilt and afterward felt as though you sold yourself short? Listen to four experienced quilters discuss their process with selling quilts, from the good to the bad.

UNCONVENTIONAL & UNEXPECTED: AN INTERVIEW WITH RODERICK KIRACOFÉ

LE08 Thursday, February 17, 5:45 p.m.

Mary Fons

Few books have been more influential to the spirit and aesthetic of the modern quilt than 'Unconventional & Unexpected: American Quilts Below The Radar, 1950-2000' by collector and author Rod Kiracofé. Known for his keen eye and tireless advocacy for American quilts of all kinds, Rod has worked as a consultant with museums, private collectors, and corporations such as Levi Strauss. He has curated exhibits in galleries across the country, and many MQG members point to his special exhibit for QuiltCon in 2013 as an all-time favorite. Much to the delight of his fans in both the quilt and art worlds, an updated and expanded 2nd edition of 'Unconventional & Unexpected' was recently issued by Quiltfolk/Schiffer Publishing. To celebrate the occasion, Rod is returning to QuiltCon for a lively conversation with popular lecturer and quilt history nerd Mary Fons. You'll enjoy behind-the-scenes photos of Rod's "Quilt Barn" in San Francisco, hear stories about the wild world of quilt collecting, and see quilts that will blow you away. A must-see event!

IMPROV LIFE, IMPROV QUILTS

LE09 Friday, February 18, 9 a.m.

Heidi Parkes

Improvisation is a way of making art that mirrors life, with no takebacks or re-dos. We must move ever forward making the most of what we've got. Heidi will share her journey as a quilter, and will offer insights into her creative process. This intimate lecture will dig into the existential and inspire you to find beauty and potential in any situation.

BEYOND COLOR: CREATING DRAMATIC QUILTS

LE10 Friday, February 18, 10:15 a.m.

Cassandra Beaver

Did you know that most art schools have students work in greyscale for months before they add in the element of color? Color is perhaps the strongest design aspect used by quilters, but our work is best when we consider all elements of design and how they work together. In this lecture, Cassandra looks at the role line, texture, shape, and space play in creating dynamic designs regardless of how much or little color is used in the final product. Creative challenges and prompts scattered throughout the lecture will leave you inspired to try new design techniques!

LETTING GO OF CONTROL THROUGH FABRIC DESIGN

LE11 Friday, February 18, 11:30 a.m.

Carrie Bloomston

Ever wonder how fabric is made? Ever want to design fabric yourself? Carrie Bloomston is a Phoenix-based artist, author, middle school art teacher, and textile designer. Carrie has designed eight collections for New Jersey-based Windham Fabrics and her collections are sold all over the world. Carrie's journey to fabric design is unique in that she designs her prints by hand on paper, and also unique in that she invites weirdness into the process whether through collaboration or letting go of control in the printing or design process. In this interactive conversation, Carrie will offer a peek into the life of a fabric designer in the quilting industry, what she learned in art school, and her specific process. She'll invite conversation and questions from the audience to ignite dialogue, enhance your creativity, and enrich your understanding of textile design.

TEACH IT: THE LEGACY OF QUILTING

LE12 Friday, February 18, 12:45 p.m.

Jessica Plunkett

Have you ever had a family member or friend admire your quilts? Have they asked you about your craft? Do you want to share your knowledge with your loved ones even if they show some resistance? Jessica talks about productive ways to share the craft of quilting with others and grow our quilty community!



STRATEGIES FOR SEWING COMPLEX DESIGNS

LE13 Friday, February 18, 2 p.m.

Tighe Flanagan

There are many ways to translate a design into fabric and seams. This lecture will explore some strategies Tighe uses to bring his intricate ideas to life! He'll begin by taking stock of different tools in the quilting arsenal — traditional piecing, paper piecing, partial seam construction, y-seams, and appliqué. He'll look at examples of when a tool might make sense for a specific job. There are always multiple ways to execute a design, and he will talk about some pros and cons — seam placement, efficiency, complexity, and so on — of different approaches you might consider for your next project!

LINER NOTES AND LABELS: DOCUMENTING YOUR WORK

LE14 Friday, February 18, 3:15 p.m.

Laura Hartrich

Do you need to step up your documentation game? Does labeling your quilts seem utterly tedious when all you want to do is keep sewing? Laura Hartrich is on a mission to convince quilters that documenting their work is worth the effort, and that the process can enrich any quilter's creative practice! She will outline the various methods she uses to document her own work (think notebooks and labels), sharing tons of inspiration images and sketchbook sneak-peeks. You will walk away with simple, attainable ideas for recording the details of your work, along with motivation to make it happen even when you would rather just be sewing.

APPROPRIATION OR APPRECIATION: NAVIGATING CULTURAL MINEFIELDS

LE15 Friday, February 18, 4:30 p.m.

Melissa de Leon Mason

Important conversations are happening around race, culture, and creativity. Increasingly, modern quilters find themselves asking whether using motifs, techniques, and materials significant to a culture other than their own is appropriate. While many quilters "just want to quilt," awareness and sensitivity over cultural colonialism and appropriation continues to grow, especially recently as quilters and vendors have publicly grappled with the mistakes of the past. This lecture will guide you through the history and meaning of appropriation, and its relevance in the quilting world. Melissa will help you shift your perspective to see through the lens of another culture, and understand why something one person may think is harmless could be hurtful to another. Then she will explore how to find inspiration while using best practices to spot, understand, and avoid appropriation in your own work. This lecture will be educational, positive, and allowing of generosity and patience with ourselves so we can continue to move forward as a community that is informed, thoughtful, and equitable to all.

CRAFTIVISM: CRAFTING SOCIAL CHANGE

LE16 Friday, February 18, 5:45 p.m.

Shannon Downey

Shannon Downey, a.k.a. Badass Cross Stitch, will bring you on an exploration of the impact that craft can have on social and political issues through historic and modern case studies. She will share some best practices and critical questions that we should be asking ourselves as we continue to construct and evolve the modern craftivist movement. (And it will be super fun and joyful!)

ACTIVIST ART: THE SJSA REMEMBRANCE PROJECT

LE17 Saturday, February 19, 9 a.m.

*Sara Trail
Teresa Duryea Wong*

Activism through quilting is nothing new. Quiltmakers have turned to needle and thread to express their views on politics and social injustice for at least 200 years. Quilt historian and author Teresa Duryea Wong will discuss historical quilts that express outrage at war, politics, and inequality, and how thousands of quilters and volunteers are continuing this legacy through the Social Justice Sewing Academy Remembrance Project. SJSA Founder Sara Trail will introduce this special exhibit on display at QuiltCon, which many modern quilters have embraced. She will highlight how this public art project honors victims of police brutality, racial killings, and other socially unjust murders, and you will learn how you can play a vital role in this activist movement.

BUILDING COMMUNITY THROUGH QUILTS

LE18 Saturday, February 19, 10:15 a.m.

Maria Shell

In 2014, Maria Shell spent two months as an artist-in-residence at the McColl Center for Art + Innovation in Charlotte, North Carolina. While there, she worked weekly with the formerly chronically homeless community now living in Moore Place. By teaching basic sewing skills to the residents, she developed a relationship with them that eventually led to the making of a community quilt. That quilt celebrates the individuals and their journey towards finding a home and a community. Since then, Maria has gone on to work with communities and organizations across the US, helping them to build their own quilts and share their own stories.

FINDING MY CREATIVE IDENTITY: STANDING TALL AS A QUILTER FEATURED PRESENTATION

LE19 Saturday, February 19, 12:15 p.m.

Latifah Saafir

A quilter for over a decade and a sewist practically her whole life, Latifah Saafir has worn many hats. As one of the founders of The Modern Quilt Guild and the Los Angeles Modern Quilt Guild, Latifah has consistently focused on creating community. Latifah is widely known for her body of work that features glorious curves, clean lines, bright colors, and a quintessential modern aesthetic. Join Latifah Saafir as she talks about her journey as a creative, standing tall in your own voice, and the importance of creating inclusive spaces.

THE 5 SKILLS OF FMQ

LE20 Saturday, February 19, 2 p.m.

Christina Cameli

If free-motion quilting seems like a lot to master, that's because it's actually five skills, not just one! Learn from Christina what you can do to improve each of those five skills. You will walk away feeling encouraged and knowing which steps to take next in your free-motion journey.

INTRO TO ISLAMIC GEOMETRY FOR QUILTERS

LE21 Saturday, February 19, 3:15 p.m.

Tighe Flanagan

This lecture will introduce Islamic geometry from a quilter's point of view. Islamic geometry has a rich history and a vibrant community of practitioners – just like quilting! Tighe will take you on a trip around the world to look at some beautiful examples of mosaics, carvings, and architecture. In order to talk about and analyze these patterns, he will share different symmetry families and their corresponding grids. Tighe will also show you color palettes and introduce some shape terminology. The Islamic geometry community is vibrant and full of all types of artists and mathematicians – a great area to explore as a quilter.

100 DAYS TO CREATIVE BLISS

LE22 Saturday, February 19, 4:30 p.m.

Sarah Ruiz

100 day projects are an excellent way to both practice creative discipline and discover creative freedom. Sarah will discuss the benefits of a daily practice and explore what she has learned about creativity from 5+ years of 100 day projects and related creative goal-setting. Whether you are looking for renewed focus and motivation in your quilting work, planning to practice a new skill, or simply wanting a bit of daily joy, this lecture will help get you started!



SOLD: QUILTS IN THE ART WORLD

LE23 Saturday, February 19, 5:45 p.m.

Mary Fons

Fine art that depicts quilts or quilt motifs, or that incorporates actual quilts, lives in modern art museums around the world. In the 1960s, superstar artists like Robert Rauschenberg and Romare Bearden were doing it; today, art darlings such as Sanford Biggers, Tracey Emin, and Bisa Butler show us that quilts have a place in the vaunted, exclusive domain of high art. In this debut lecture from quilt nerd and popular QuiltCon speaker Mary Fons, she will examine works of quilt-adjacent art, from Amy Sherald's portrait of Michelle Obama to Judy Chicago's 'The Dinner Party' and many others. The good news: These works are amazing, and they elevate quilts in popular culture, big time. The bad news: Most of the artists stay miles away from "the quilt world". What's with the casual aversion? Do they not know we exist? Or is this art-world snobbery at its ugliest? Come with Mary to the galleries and the cocktail parties to figure out why art quilts and quilts-as-art mix like oil and water.

MINIMAL DESIGN, MAXIMUM IMPACT

LE24 Sunday, February 20, 9 a.m.

David Owen Hastings

The modern quilting movement is evolving and changing, but one thing remains consistent: simple, sparse design combined with thoughtful quilting make an outstanding combination. In this lecture, hear about David's process for coming up with simple graphic quilt designs, starting with stitched paper models (called maquettes). See examples of how to translate an architectural photo into quilt designs. David will also discuss methods of straight-line quilting and breaking free of stitching in the ditch.

TRUSTING YOUR COLOR INSTINCTS

LE25 Sunday, February 20, 10:15 a.m.

Carrie Bloomston

Learn to honor your own voice and trust your wisdom about color in this lecture from art teacher and fabric designer Carrie Bloomston. She will discuss essential color theory teachings as well as the emotional impact of color. Carrie will help guide you to your own intuition about understanding color from the inside out. Art history offers many lessons for the modern quilter when it comes to choosing palettes, conveying mood, and expressing ideas. The secret is shutting out the noise to get quiet enough to hear your own voice. Let's dig in!

ADVENTURES IN QUILT MATH

LE26 Sunday, February 19, 11:30 a.m.

Daisy Aschehoug

Once you've mastered adding a quarter inch for seam allowances and multiplying your fabric needs by the number of blocks in your quilt, what's left? Daisy's love of repetition, combined with some ambitious piecing goals, has led her into some tricky math territory and she is NOT a math person. Come along as she shares some of her more exciting geometry questions and the quilts that came out of them.

A NEW ERA OF MODERN QUILTING

LE27 Sunday, February 20, 1 p.m.

Laura Loewen

Have you ever struggled defining yourself as a modern quilter? Maybe you are working in a postmodern design space? Look into the past Modern Art Movement and the Modern Quilt Movement to see how leaders broke free from traditional form. Now that modern quilts have become a recognized and established part of the quilting and art worlds, where do you go? Join Laura as she talks you through her view of the postmodern shift seen within the Modern Quilt Movement. Learn how you can continue to evolve as a modern quilter and expand on the movement that was built before us.

SPARK YOUR CREATIVE MOJO

LE28 Sunday, February 20, 2 p.m.

Jennifer Sampou

Sparking your creative mojo takes curiosity, practice, and being open to the unknown. We neither design nor create in a vacuum and the more we understand our own creativity, the less mysterious it becomes. Each of us is born with that creative spark so let's learn how to properly harness and run with it. Whether you are beginning with baby steps or need a refresher, reacquainting yourself with your own mojo no longer needs to elude you. Jennifer debunks old myths about creativity, explores current research, and draws from her own well of lifetime experience with color and design. She believes that we all have the capacity to be creative ... and after her talk, you will too.





ACCENTS AND NEEDLE-TURN APPLIQUÉ WITH BOW

APP100 Friday, February 18, 9:00 a.m. - 4:30 p.m.

Carolyn Friedlander

In this handwork class, Carolyn will focus on both the technique and the creative possibilities of the versatile Bow quilt design, inspired by the curvature of a rainbow but open to loads of interpretation. You will work through adding flavor - in the right amounts - to each block, as well as practice creating cohesion with multiple colors and prints.

Material Fee: \$12, includes the Bow quilt pattern.



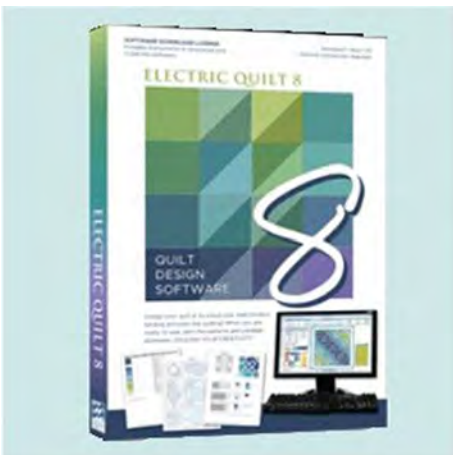
QUILT DESIGN WITH ORIGAMI PAPER COLLAGES

DES001ThuAM Thursday, February 17, 9 a.m. - noon

DES001Sun Sunday, February 20, 9 a.m. - noon

Brigit Dermott

Learn how to create your own quilt designs using origami paper collage! In this workshop, you will use origami paper to make sketches for quilt designs in a fun and improvisational way. Then, you will learn how to translate these sketches into workable quilt designs. You can work in any quilt design software of your choosing or keep things low-tech and use graph paper to plan your quilt. The focus of the class will be tapping into your creativity using this playful and approachable design method. If you remember how to cut and paste, you have all the skills you need to enjoy this class!



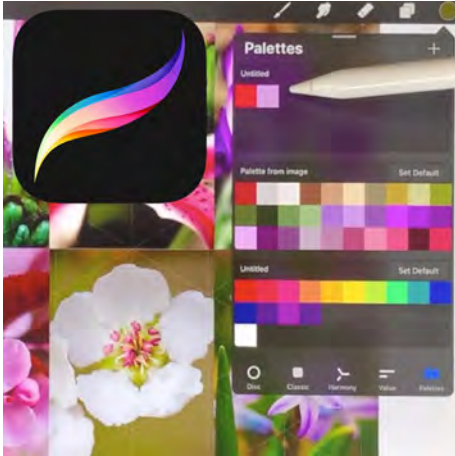
EQ8 FOR BEGINNERS

DES002ThuAM Thursday, February 17, 9 a.m. - noon

DES002SatEve Saturday, February 19, 6 - 9 p.m.

Cheryl Brickey

Are you new to Electric Quilt 8 and don't know where to start? You can leave your pencil and graph paper behind when you learn the basic functions and explore the versatility of EQ8 in this beginner workshop. Cheryl will cover how to navigate the block and quilt worktables, use library blocks and fabrics, create your own blocks, and build a quilt top with the blocks using different block settings, colors, fabrics, sashing, borders, and more. You must bring your own laptop computers with EQ8 already installed and activated.



BEGINNING PROCREATE QUILT DESIGN

Steph Skardal

Are you interested in designing your own quilts in the Procreate app, available on iOS? This workshop will cover an introduction to Procreate and application of some basic Procreate skills to quilt design. Skills covered will include Procreate gestures, working with color palettes, working with brushes and assisted drawing, transformation and selection tools, and importing quilt designs. This class is best suited to those who have not invested a lot of time into Procreate or are new to the Procreate app. You must bring your own device with the app installed for class.

DES003ThPM Thursday, February 17, 1:30 - 4:30 p.m.

DES003ThEve Thursday, February 17, 6 - 9 p.m.



DRAFTING ABSTRACT GEOMETRIC QUILTS

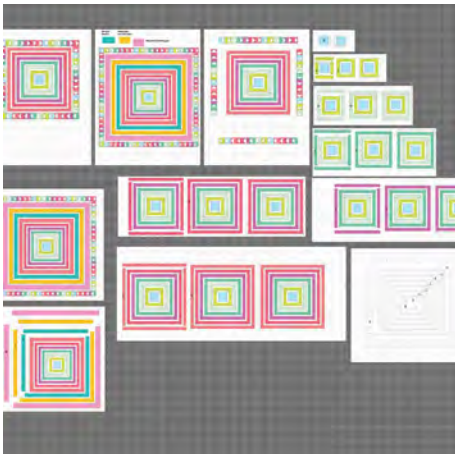
Audrey Esarey

Want to develop and draft original abstract quilt designs with an emphasis on straight lines and angles? In this class, you will learn design concepts, color placement strategies, and practice drafting techniques to create several quilt blocks. Audrey will teach you how to translate your drafted quilt design into a ready to sew pattern. This is a no-sew class.

DES004ThuEve Thursday, February 17, 6 - 9 p.m.

DES004FriEve Friday, February 18, 6 - 9 p.m.

Material Fee: \$15, includes "Drafting Angular Quilts" booklet and pattern.



ILLUSTRATOR FOR QUILT DESIGN

Joanna Marsh

Use Adobe Illustrator to design your quilt patterns! Joanna will review the basic tools in the workspace, show how to create and draw blocks, change the size and layout of your quilt, and re-color and use fabric swatches. Discover how to make cutting charts for easy calculation of fabric requirements and learn how to create customized cutting templates for curved and irregular shapes. This class is designed for beginner users with little to no Adobe Illustrator experience. You must bring your own laptop with Adobe Illustrator already installed.

DES005 Sunday, February 20, 9 a.m. - noon



QUILTING WITH GRADIENTS

Melissa de Leon Mason

Rainbow lovers, unite! This no-sew class is all about using gradient spectrums in modern quilts. Here you will learn about creating two-, three-, and four-color gradients, focusing on understanding color fundamentals and interaction. You will use color chips, solid scraps, colored pencils, and other tools to play and learn. Using the Smokeset quilt pattern as your canvas, you will become confident in your ability to curate a seamless palette of color and translate that into a fabric pull. This is a no-sew class.

DES006FriAM Friday, February 18, 9 a.m. - noon

DES006SatAM Saturday, February 19, 9 a.m. - noon



ALL ABOUT USING FABRICS IN EQ8

Cheryl Brickey

Discover how to make your quilt renderings in EQ8 look more like the quilt you plan to make in this workshop with Cheryl! Learn to import fabric swatches, manipulate and edit the images, and create your own fabric libraries. This is an intermediate EQ8 class which assumes that you have a basic understanding of EQ8 and can navigate the program. This is a hands-on computer class and you must bring your own laptop computers with EQ8 already installed.

DES007 Friday, February 18, 9 a.m. - noon

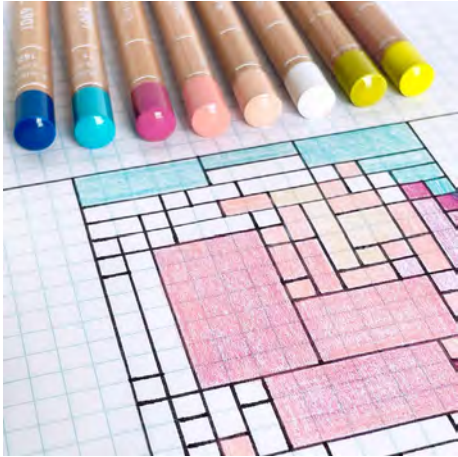


MODERN QUILT DESIGN USING EQ8

Cheryl Brickey

Looking to design modern quilts using EQ8 with features such as negative space, multiple block scale, and improv-style blocks and quilts? In this class, you will learn how to use the three different quilt layouts (Horizontal Grid, Horizontal/Vertical Strip, and Custom) to get your modern quilts from your sketchbook into your computer. You will also learn how to determine which layout is the appropriate starting point for your design. This is an intermediate EQ8 class which assumes that you have a basic understanding of EQ8 and can navigate the program well. This is a hands-on computer class and you must bring your own laptop computer with EQ8 already installed.

DES008 Friday, February 18, 1:30 - 4:30 p.m.



LEARN TO DESIGN PIXEL QUILT BLOCKS

Kerry Goulder

Designing pixel quilt blocks is a fun way to dive into patchwork sewing. Using simple squares, you can create just about any motif you'd like, from a heart to a favorite character. Designing and sewing your own pixel quilt block can help break those walls down and be a great stepping-stone to more detailed quilt designs including pictorial quilts. Kerry will show you how to tackle designing pixel quilt blocks on graph paper, along with other easy methods, tips and tricks.

DES009FriEve Friday, February 18, 6 - 9 p.m.

DES009SatEve Saturday, February 19, 6 - 9 p.m.



CREATING COLOR PALETTES

Tara Faughnan

This class will focus on how to create a cohesive color palette, paying particular attention to value and contrast. Tara will delve into color interaction, the importance of value in creating movement, and how the use of shape can tell a story. You will work through a variety of exercises to create a unique color palette, and will discuss how to work in a series using color. This is a no-sew class.

DES010FriEve Friday, February 18, 6 - 9 p.m.

DES010Sun Sunday, February 20, 9 a.m. - noon



EXPLORING VALUE IN THE HOURGLASS QUILT

Tara Faughnan

The hourglass quilt is a wonderful exploration of both technique and value. Tara will cover the basics of creating this time-honored block, including tips and tricks for squaring, matching points, and several ways to make the block. She will also discuss how color placement and value can create high impact compositions that move the focus across the quilt.

DES011 Saturday, February 19, 9 a.m. - 4:30 p.m.



INTERMEDIATE PROCREATE QUILT DESIGN

Steph Skardal

This workshop will cover intermediate skills in Procreate and application of intermediate Procreate skills to quilt design. Skills covered will include assisted drawing, planning for quilting, intermediate interactions with color patterns and color palettes, interacting with photos for improvisational design, and repeating patterns. Time permitting, Steph will also discuss strategies for converting a quilt design in Procreate into a quilt pattern. This class is best suited to those who have invested time into Procreate and want to take their skills to the next level. You must bring your own device with the app installed for class.

DES012SatAM Saturday, February 19, 9 a.m. - noon

DES012SatEve Saturday, February 19, 6 - 9 p.m.



ACTIVIST QUILTING

Sara Trail

What issues are important to you? How do you represent your ideas in textile art? Join Social Justice Sewing Academy founder Sara Trail for a workshop exploring these ideas to create your own social justice quilt block. Sara will lead you in considering issues, engaging in meaningful conversation, and inspiring the use of textile art to communicate ideas. You will discuss each other's block concepts and your blocks will be collected at the end of class to become an SJSA community quilt.

DES013SatPM Saturday, February 19, 1:30 - 4:30 p.m.

DES013SatEve Saturday, February 19, 6 - 9 p.m.

DES013Sun Sunday, February 20, 9 a.m. - noon



QUILT YOUR LIFE: PLAN FOR SUCCESS

Kitty Wilkin

Come explore the world of quilts created to mark milestones, and see why these quilts are a fun and meaningful path to joyful sewing in this busy world. In this workshop, Kitty will share her journey through the world of creating milestone quilts, beginning with the quilt she created for her third child to mark his first year of life, and will explore other life events that can be documented through the creation of a quilt. She will talk about the many variables to consider when designing milestone quilts and you will come up with a plan for a milestone quilt of your own. The class will end with a quick demo on how to design your own FPP patterns to open design possibilities. Kitty will guide you through the process so that you leave feeling inspired and ready to dive into creating a positive feedback loop in your life, documenting your days through the creation of a quilt. This is a no-sew workshop.

DES014SatPM Saturday, February 19, 1:30 - 4:30 p.m.

DES014Sun Sunday, February 20, 9 a.m. - noon

Material Fee: \$10, includes Quilt Your Life planning documents (20 pages).



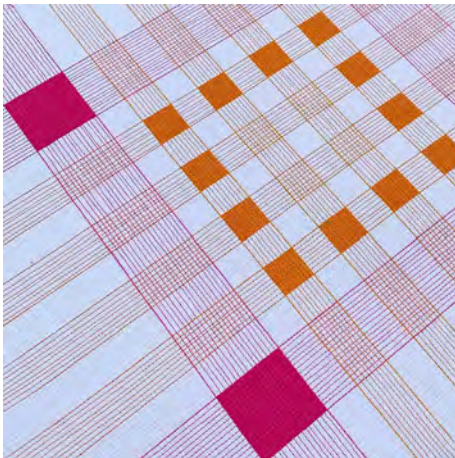
CLAMBAKE: A RULER-QUILTING DESIGN FEAST

DSMQ001 Thursday, February 17, 9 a.m. - 4:30 p.m.

Geraldine Wilkins

In this workshop, learn how to use one ruler for multiple ruler-quilting techniques, such as modern edge-to-edge quilting, blocks, borders, sashing, and more. These designs can be used on almost any project and the techniques learned with this ruler can also be used with other rulers. In class, you will use the designs and techniques to creatively quilt eight different designs.

Material Fee: \$20, includes pattern packet.



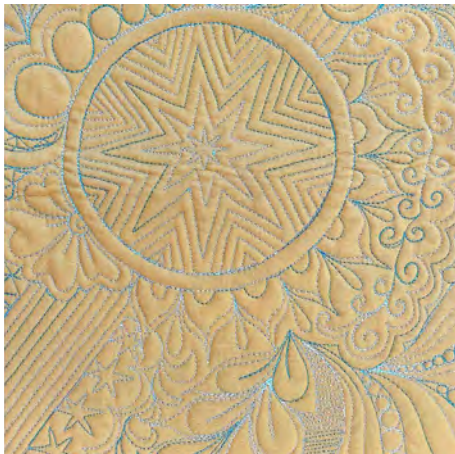
MATCHSTICK QUILTING

Cassandra Beaver

DSMQ002ThuPM Thursday, February 17, 1:30 - 4:30 p.m.

DSMQ002ThuEve Thursday, February 17, 6 - 9 p.m.

Explore the use of thread weight as a design element in matchstick quilting and beyond. You will use a walking foot and 12, 28, and 50 weight threads to create a mini quilt that will work as a wall-hanging or pillow top. Learn to efficiently and effectively do matchstick quilting, use thread color to activate the negative space of a quilt, and experience how thread weight can be used to alter the effect of quilting stitches on your project.



QUILTED COMPOSITIONS

Christina Cameli

DSMQ003ThuEve Thursday, February 17, 6 - 9 p.m.

DSMQ003Sun Sunday, February 20, 9 a.m. - noon

When you want the quilting in your negative space to be varied and interesting, where do you start? Explore planning, marking and implementing a quilted vision. Christina will discuss overall compositional layout, specific designs for different area types, and how to create a strategy for completing the quilting you've planned.



POWER CURVES: SERPENTINE RULER DESIGNS

DSMQ004 Friday, February 18, 9 a.m. - 4:30 p.m.

Geraldine Wilkins

Leave frustration behind and get started on the road to successful domestic machine ruler quilting. Learn how to use ruler reference lines as well as the power of using one ruler to create many serpentine designs. These designs require little to no marking!

Material Fee: \$20, includes pattern packet.



QUILTING BETWEEN THE LINES: WALKING FOOT

DSMQ005 Friday, February 18, 6 - 9 p.m.

Christa Watson

Get out of the ditch and learn to quilt between the lines instead! In this domestic machine quilting workshop, you will learn several of the walking-foot designs showcased in Christa's book, "99 Machine Quilting Designs." Using your seam lines as a guide, you'll learn how to stitch organic, linear designs with no marking of the quilt! These include but are not limited to: chevrons, zigzags, parallel lines, wavy line variations, and some gentle curves. You will leave empowered to embrace the beauty of imperfection as you learn to quilt your own quilts!

Material Fee: \$27, includes "99 Machine Quilting Designs" by Christa Watson. If students are taking more than one workshop from Christa, the same book can be used for both.



ALT GRIDS FOR FMQ

DSMQ006 Friday, February 18, 6 - 9 p.m.

Christina Cameli

Using straight lines to divide your quilting space into smaller areas is a fun way to quilt and it produces fabulous geometric rhythm and texture. In this class, Christina will teach you to break away from standard grids and use straight lines to divide the space in new ways. You will explore four different structures, one at a time, and you'll have time to draw each structure, fill it with free-motion quilting, and bask in the possibilities.



SCRAPPY QAYG

Tia Curtis

Do you ever find yourself in need of a quick project that will both challenge and stimulate you? Do you love to multitask and are looking to get the most out of your precious sewing time? Do you have far too many scraps and enjoy making small projects or just want to play with color studies? If you answered yes to any of the above questions, Scrappy Quilt As You Go is the class for you. Tia has used the QAYG technique for years to test out ideas and then make bags, gifts and quilts with the results. Let Tia show you some of her favorite techniques to make really useful QAYG pieces. You will feel comfortable creating in a judgment-free zone and leave inspired to dump all your scraps out on the floor and make wonderful things when you get home. Tia will also show you how to join quilted pieces together so you can easily create large studies from multiple quilted pieces.

DSMQ007FriEve Friday, February 18, 6 - 9 p.m.

DSMQ007Sun Sunday, February 20, 9 a.m. - noon



GRAFFITI QUILTING ON A DOMESTIC MACHINE

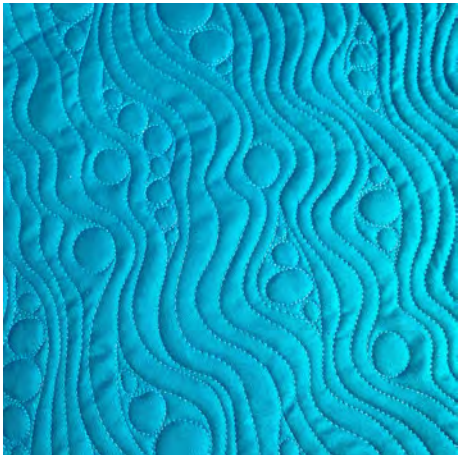
Karlee Porter

Are you a domestic machine quilter who loves the look of graffiti quilting? Learn how to take many different motifs and combine them together into one unified quilt in this workshop. Learn the ins and outs of individual elements, how and when to use them, and how to create a unified and completely unique, one-of-a-kind wholecloth quilt. Your free-motion quilting skills will be expanded and sharpened to overflow your toolbox of quilting motifs! This is a great opportunity to let loose, think outside of the traditional quilt block, and really just enjoy the journey of free-motion quilting. This class, accompanied by Karlee's best-selling book "Graffiti Quilting," will set you on a course for solid quilting success for years to come.

DSMQ008SatAM Saturday, February 19, 9 a.m. - noon

DSMQ008SatPM Saturday, February 19, 1:30 - 4:30 p.m.

Material Fee: \$25, includes "Graffiti Quilting: A Simple Guide to Complex Designs" by Karlee Porter.



FMQ FLUIDITY

Christina Cameli

Work with natural, flowing designs in this intermediate free-motion class for domestic machine quilters. Explore three different design structures with high textural impact. You'll have plenty of time to stitch in this class, and find an easy, confident rhythm.

DSMQ009 Saturday, February 19, 6 - 9 p.m.



QUILTING BETWEEN THE LINES: FREE MOTION

DSMQ010 Saturday, February 19, 6 - 9 p.m.

Christa Watson

Use the seam lines on your quilt as a guide to add gorgeous texture to your quilts with absolutely no marking! In this domestic machine quilting workshop, you will practice many free-motion designs showcased in Christa's book, "99 Machine Quilting Designs." Embrace perfectly imperfect quilting while exploring a wide range of motifs that include: continuous curves, S-curves, geometric chains, chevrons, zig-zags, and other linear geometrics. You will leave class armed with the confidence that you can indeed quilt your own quilts!

Material Fee: \$27, includes "99 Machine Quilting Designs" by Christa Watson. If students are taking more than one workshop from Christa, the same book can be used for both.



GOING IN CIRCLES: A RULER-QUILTING COMPASS

DSMQ011 Saturday, February 19, 6 - 9 p.m.

Geraldine Wilkins

Want to get started with ruler quilting on a domestic sewing machine? Learn the power of the circle design technique for machine quilting from Geraldine, a master at using acrylic rulers to create unique and interesting quilting designs on a domestic machine. Discover tips and tricks to minimize thread breaks and other common challenges with ruler quilting.

Material Fee: \$15, includes pattern packet.



JUST ONE WORD: DIMENSIONAL APPLIQUÉ EMBROIDERY

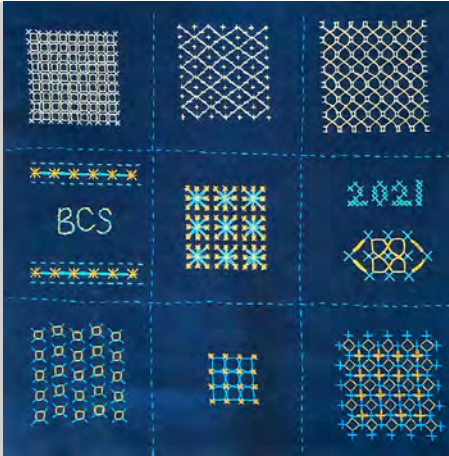
EMB001ThuAM Thursday, February 17, 9 a.m. - noon

EMB001ThuEve Thursday, February 17, 6 - 9 p.m.

Betz White

Stitch a one-word mantra while learning how to embroider felt appliqué. In this class, Betz will teach you her expert techniques for working with wool felt as you stitch a vibrant 3D design. Customize your piece with a four-to-five letter word such as LOVE, HOPE, PEACE, or a significant date.

Material Fee: \$10, includes pattern as well as templates and stitch guide. Material fee waived if student has previously purchased the "Just One Word" PDF pattern from Betz White.

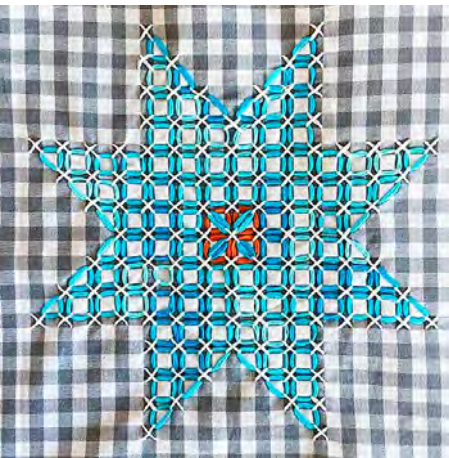


WOVEN EMBROIDERY SAMPLER

Blair Stocker

Learn unexpected and beautiful combinations of hand embroidery stitches in this workshop! Blair will walk you through nine different stitch patterns to create a sampler inspired by the look of vintage Dutch darning samplers. These were practice cloths used to learn new stitches and often framed and proudly displayed when completed. Each of the patterns you'll learn will combine simple embroidery stitches, a bit of sashiko-type stitches, some vintage chicken scratch embroidery thrown in there, and even a little cross stitch. You'll then level up your stitches by weaving and looping through them, which is downright magical! Proudly display your finished sampler and use it as a reference to inspire your future projects. If you have done simple hand embroidery, you have all the skills you need for this workshop.

Material Fee: \$10, includes one 18" panel of white or navy cotton fabric with a preprinted, wash-away grid.



SNOWFLAKE EMBROIDERED GINGHAM STAR

Blair Stocker

Snowflake embroidery, also known as chicken scratch embroidery, is vintage handwork. It is always stitched on gingham fabric and creates an unbelievably beautiful texture over the surface of the gingham. In this project-based class, you will learn this wonderful craft by hand stitching a classic eight-pointed star on a gingham panel to create a pillow or mini quilt. Blair has been stitching snowflake embroidery patterns in her popular block of the month program and will share all of the tips and tricks she has learned along the way. You will learn how different colors of thread can be stitched into different gingham squares on your cloth to create complex-looking (but surprisingly simple) optical illusions. It is truly magic!! This method of handwork can be incorporated into all kinds of projects you make, from quilts to curtains! If you have done simple embroidery before, you have all the knowledge you need to take this class.



ELEVATING PATCHWORK WITH HAND EMBROIDERY

Betz White

Explore adding hand embroidery to patchwork with a fun sampler-style project. Bring along a quilt block or panel as your canvas. Betz will teach a range of embroidery stitches to embellish areas of patchwork. After sampling each stitch, you will create appliquéd designs using motifs from a coordinating print. Then, you will tie it all together combining the embroidery stitches learned in class. The finished sampler can be used as a jumping-off point for mini quilt, pillow cover, or tote.

Material Fee: \$5, includes embroidery stitch glossary and resource guide.

EMB002FriAM Friday, February 18, 9 a.m. - noon

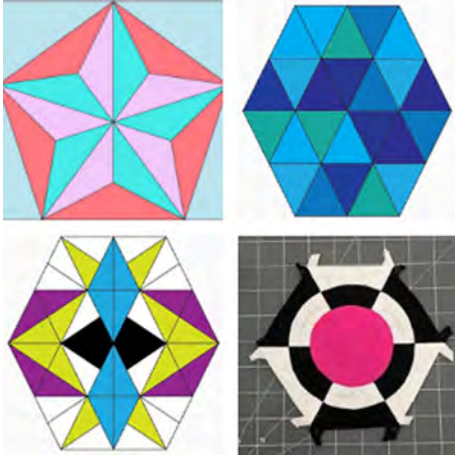
EMB002SatEve Saturday, February 19, 6 - 9 p.m.

EMB003FriEve Friday, February 18, 6 - 9 p.m.

EMB003Sun Sunday, February 20, 9 a.m. - noon

EMB004FriEve Friday, February 18, 6 - 9 p.m.

EMB004SatEve Saturday, February 19, 6 - 9 p.m.



CHOOSE YOUR EPP ADVENTURE

Joanna Marsh

Are you ready to design your own English Paper Piecing patterns? In this class, you will choose a basic shape and discover ways to break it down into an EPP pattern with templates. Experiment with curves within straight lines, secondary designs, geometric patterns, or random designs for a modern finish. You'll design, create templates, pick fabrics, and begin stitching up your own unique EPP pattern.

Material Fee: \$20, includes EPP Design Kit: Zip case with fine point pencil, cardstock preprinted with shapes, paper cutting scissors, glue sticks, Frixion pen, EPP needles, EPP thread, Solid fabric assortment for your design.



PORTRAITURE IN FPP

Angela Bowman

Start with a photograph and end with a foundation paper piecing pattern. Transform your cherished photo into an artistic quilt pattern. Learn the complete process for designing a portrait quilt FPP pattern using Adobe Illustrator on both a computer and iPad Pro with Apple Pencil. If you are experienced in FPP, but are new to Adobe Illustrator, this class is for you. This class requires BOTH a laptop AND an iPad Pro & Apple Pencil, both already installed with the latest version of Adobe Illustrator.



PIECING WITH TEMPLATES

Melissa de Leon Mason

Learn how to use templates to create unique quilts with non-traditional shapes. In this class, you will become a master of templates, creating them from paper and plastic and understanding how and when to use them. You will learn how to piece unusual shapes and curves using the Sonder quilt pattern, an exclusive for this class. By the end of class, you will walk away with completed Sonder blocks, new templates, and the knowledge and skills to create the entire quilt.

Material Fee: \$10, includes printed templates.

FDP001 Friday, February 18, 6 - 9 p.m.

FDP002 Thursday, February 17, 9 a.m. - 4:30 p.m.

FDP003ThuEve Thursday, February 17, 6 - 9 p.m.

FDP003SatEve Saturday, February 19, 6 - 9 p.m.



BRIMFIELD MEADOWS

Brimfield Awakening

While attending the Brimfield Antiques Show in Brimfield Massachusetts, Kim and Nisha happened upon a dealer with a Hefty trash bag full of stinky old textiles. Among those textiles were two orphaned quilt blocks from long ago that they couldn't get out of their head! They went on to redesign the blocks for EPP and the rest is history. The Brimfield Meadows block is one of those two original blocks! Learn how to create this beautiful block, including how to easily sew curves using the flat-back stitch. While this course is best suited for those with EPP experience; all students are welcome.

FDP004 Friday, February 18, 9 a.m. - 4:30 p.m.



FPP BOOTCAMP

Melissa de Leon Mason

Take a deep dive into foundation paper piecing while creating the delightful Terra pillow pattern. In this class, you will learn everything you need to be a confident paper piecer and walk away able to tackle any FPP pattern you come across. Melissa will start by talking about the materials that make FPP headache-free and will include seams, cutting, and angling. She will then decode the language of FPP patterns and teach essential tricks to make seam-ripping obsolete. You will also learn elements of FPP design and how to get started making your own FPP patterns.

FDP005FriEve Friday, February 18, 6 - 9 p.m.

FDP005Sun Sunday, February 20, 9 a.m. - noon

Material Fee: \$12, includes printed pattern and worksheets



MASTERING FOUNDATION PAPER PIECING

Veruschka Zarate

Want to master the skill of precise and detailed quilt piecing? Foundation paper piecing is a method of quilting that allows for precise quilting using patterned paper for the sewing guide. Many quilters are intimidated by FPP or hesitant to try, but this class will turn you into an FPP master! You will receive step-by-step demonstrations and instruction while working through a special FPP pattern designed to highlight the skills needed to successfully execute any FPP pattern with masterful craftsmanship. Veruschka will review FPP from start to finish, including fabric alignment, trimming, pressing, and so much more. You will leave class feeling completely confident to tackle any FPP pattern.

FDP006 Saturday, February 19, 9 a.m. - 4:30 p.m.

Material Fee: \$20, includes printed pattern



IRREGULAR FPP SHAPES

Cassandra Beaver

Foundation Paper Piecing makes for extremely accurate piecing and perfect points, but one of its most exciting uses is the creation of blocks using irregularly shaped components. Blocks and quilts with a wide range of irregular shapes may look complex, but they are easier than they look once you have experience with a few techniques and tips. In this class, you will choose one of three animal patterns to sew using the techniques we focus on in class.

Material Fee: \$12, includes paper pattern and paper templates

FDP007 Saturday, February 19, 6 - 9 p.m.



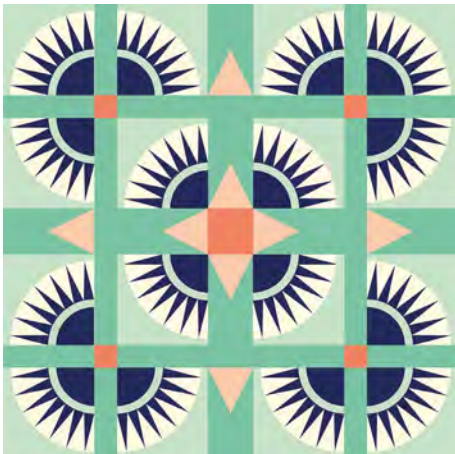
FUSSY CUTTING FOR EPP

Brimfield Awakening

Do you admire and appreciate quilts that use fussy cutting? Wondering how to get prints to line up beautifully in EPP patterns? A fussy cut is a piece of fabric that's been cut to target a specific area of a print, rather than cutting the yardage into random pieces. In this workshop, you will learn how to read or analyze fabric for fussy cutting for EPP and other types of sewing. They will discuss best practices and tips for success to help you use fussy cutting on your most favorite fabrics!

FDP008ThuPM Thursday, February 17, 1:30 - 4:30 p.m.

FDP008ThuEve Thursday, February 17, 6 - 9 p.m.



TAKE ON FPP WITH THE NY BEAUTY

Brigit Dermott

Learn how to make a fabulous New York Beauty block in this skill-building workshop! You will learn the magical freezer paper method of foundation paper piecing and how to sew curves as you make your New York Beauty blocks. You will use the Cayuga pattern to make at least one full block in the workshop. The templates for the block will be provided for you. The quilt pattern will also be available for purchase so that you can complete your project when you get home. Once you've mastered the techniques used to make a New York Beauty block, a whole world of quilt patterns and designs of your own making will be open to you.

FDP009ThuEve Thursday, February 17, 6 - 9 p.m.

FDP009SatEve Saturday, February 19, 6 - 9 p.m.



ALL ABOUT BINDING

Sue Bouchard

Learn how to prepare and sew six unique methods of binding. Sue will demonstrate how to properly prepare edges of the quilt before the binding is sewn on and then will dive into the many different options there are for binding! The workshop will cover straight, French, accent, and infinity binding, as well as how to piece binding to match the fabric on the quilt top and how to change binding colors in the corners. Each method offers a different design option for the perfect finish to your quilts.

FIN001 Thursday, February 17, 6 - 9 p.m.



IMPROV WHOLECLOTH QUILT

Jodi Robinson

In this class, you are going to throw advance planning out the window! Jodi will share with you a process of marking and designing, in an improvisational manner, directly on the fabric . . . letting the shapes and lines tell you what comes next. Come discover how freeing it can be to simply start with some basic shape templates, a ruler, and a piece of fabric, to end up with an amazing and totally unplanned wholecloth quilt. After the lecture and PowerPoint Presentation, you will mark your own wholecloth in class. Jodi will guide you through the process, and you will leave class with a completely marked wholecloth quilt, ready to take home and quilt. This is a no-sew workshop.

IMP001 Thursday, February 17, 9 a.m. - 4:30 p.m.

Material Fee: \$10, includes 2 Marking Pencils



MINI MID-MOD QUILTS

David Owen Hastings

Work small, work smart, look great. These charming little quilts are inspired by mid-century modern design and are a great skill-building project to learn a number of quilting techniques. You will start with a simple, modern color palette of neutral fabrics with a flash of color. Clean lines combined with simple design give each tiny composition a sophisticated feeling. Since you are working very small, this is a great project for using small scraps and bits of special fabric. You will learn the quilt-as-you-go method to add quilting stitches to your project. Sa-shiko-inspired hand stitching adds a sleek, linear element. Most students will complete four to six mini mid-mod quilts in class.

IMP002ThuAM Thursday, February 17, 9 a.m. - noon

IMP002ThuPM Thursday, February 17, 1:30 - 4:30 p.m.



FIELD OF JEANS

Sherri Lynn Wood

If you make it, they will come . . . and lounge on it. Piece together a dream-worthy park blanket from your family's jeans for your next outing. Gather the worn-out, outgrown denim, preferably a pair from every family member, or ask your friends to donate.

IMP003 Thursday, February 17, 9 a.m. - 4:30 p.m.



PATCHWORK SASHIKO

Diana Fitzgerald

Learn how to transform your scraps into a beautiful new textile! Using Diana's patchwork sashiko method, you will learn how to start with a stack of scraps and create a pliable piece of unique patchwork fabric with which to do whatever you want! Once you learn the method, you can then use your own fabric scraps in any size you like. It's great for visible mending, using in your favorite bag pattern, or as a unique feature in a quilt.

IMP004ThuPM Thursday, February 17, 1:30 - 4:30 p.m.

IMP004ThuEve Thursday, February 17, 6 - 9 p.m.

Material Fee: \$20, includes pattern, sashiko kit including needles and interfacing



LOG CABIN CIRCLES

Maria Shell

Log cabin blocks are one of the most recognizable quilt blocks and are ripe for reinterpreting! In this workshop, combine curved piecing with a traditional log cabin block and you have a log cabin circle! Tips, tricks, and hands-on practice will have you creating fun improv log cabin circles in no time.

IMP005ThuEve Thursday, February 17, 6 - 9 p.m.

IMP005SatEve Saturday, February 19, 6 - 9 p.m.

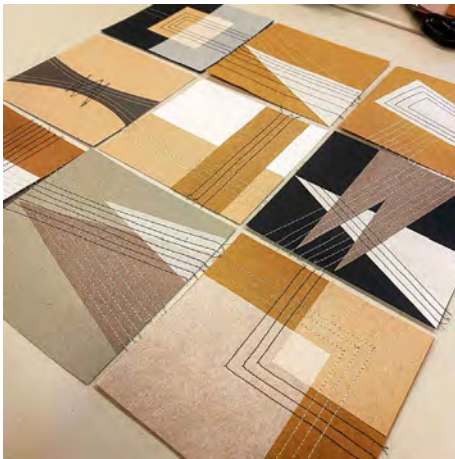


BITS & PIECES IMPROV

Maria Shell

This workshop is perfect for scrapaholics and those who don't know where to begin on a scrappy project. Learn how to sort, shape, and piece your fabric bits into vibrant improv quilts. While learning how to work with bits and pieces, you will also learn about improvisational piecing techniques and ideas for taking these techniques and creating original quilts. Learn how to work with irregular pieces of scrap fabric to create one-of-a-kind improv quilts!

Material Fee: \$25, includes over 3 yards of scraps to work with.



MODERN ABSTRACT QUILTS

David Owen Hastings

Want to make your own modern abstract quilt designs? Inspired by minimal quilts, but don't know how to start? David will guide you through a creative process for designing your own modern abstract quilts. You will explore composition and minimal design using paper and machine stitching, stitching a variety of mini quilt designs on paper and employing simple, modern, minimal shapes throughout. We will plan for the quilting lines to be a major design element while discussing color and value to select fabrics for the sewn sample. Using one of your paper quilts as a roadmap, you will translate your ideas into a small fabric quilt using the quilt-as-you-go method. Class projects can finish as mini quilts or can be test pieces for larger quilts.

Material Fee: \$20, includes A generous paper pack (kraft paper, newsprint, tracing paper, all cut to size for the workshop), handouts with notes, and surprisingly simple tools.



PEBBLE POP IMPROV

Daisy Aschehoug

Learn the basics of sewing improvisational curves with this flexible, fat-quarter-friendly pattern. Daisy will talk about contrast in colors and patterns, and you'll learn tips for sewing improv blocks that finish within a consistent size. You'll sew a variety of curved shapes, troubleshoot puckers, and experiment with secondary design elements. This technique for sewing improv curves includes detailed steps, so if you've been nervous about trying improv, this is the workshop for you. Grab that favorite stack of fat quarters you've been waiting to cut into or pick out some yardage and let's build some pebbles!

IMP006 Friday, February 18, 9 a.m. - 4:30 p.m.

IMP007 Friday, February 18, 9 a.m. - 4:30 p.m.

IMP008 Friday, February 18, 1:30 - 4:30 p.m.



STEPPING INTO IMPROV

Laura Loewen

Jump-start your confidence in ruler-cut improv piecing. If you have never tried improv before or you just want to brush up your skills, this workshop is for you! Laura will take you through the basics of improv piecing with half-square triangles, log cabin strips, drunkard's path curves, and improv stripes. The segments will build on each other as the workshop progresses. Work through improv in this fast-paced introduction to manipulating fabric to create with that wonky, improv appearance. Turn your improv panel into a mini quilt or small project after class or continue building it into a larger improv piece with the techniques learned.

IMP009FriEve Friday, February 18, 6 - 9 p.m.

IMP009Sun Sunday, February 20, 9 a.m. - noon



SWOOPIES

Daisy Aschehoug

Learn an exciting new approach to strip-set construction. Instead of regular straight lines, try out gentle, improvised curves to make strip sets for a variety of projects. This workshop will cover approaches to cutting and sewing strip sets, as well as more in-depth specifics on cutting and piecing steeper curves for construction of your own Swoopies quilt. The block consumes a lot of fabric with those skinny strips, but the dynamic results are worth it!

IMP010 Saturday, February 19, 9 a.m. - 4:30 p.m.



QUILT PHOTOGRAPHY FROM EVERY ANGLE

Kitty Wilkin

Take your quilt photos from good to GREAT in this class! Bring your smart phone (or any other camera) and learn how to master all the angles of quilt photography. Kitty will briefly cover photography basics, composition, lighting, and staging, then will dive into hands-on practice photographing your makes. From the flat lay to the drape, finding the perfect meaningful balance of props, choosing what details to highlight, and more . . . you'll leave with a toolbox full of tips and tricks to try so that you feel ready to help your quilts shine without any fancy equipment.

MSC001ThuPM Thursday, February 17, 1:30 - 4:30 p.m.

MSC001FriPM Friday, February 18, 1:30 - 4:30 p.m.



CRAFTIVISM: CRAFTING FOR IMPACT

Shannon Downey

Interested in exploring the impact that craft can have on social and political issues? Great! This fun and accessible workshop will introduce you to the long history of art + craft as tools of activism. Shannon will explore the core tenets of building community projects for social change and impact, then you will work together to brainstorm and workshop ideas that you might have for craftivism projects. You will walk away with an understanding of craftivism, the information you need to build successful craftivism projects, and a blueprint for moving your brilliant ideas forward.

MSC002 Thursday, February 17, 6 - 9 p.m.



KICK START YOUR QUILT COAT

Eliane Bergmann

Be a part of the quilt coat trend! You will use the Patchwork Chore Coat pattern in this class to construct a quilt coat. The Patchwork Chore Coat is a short coat with a button closure, and you can choose between adding a hood or a collar. Muslins will be available in class for you to try on to aid in size selection. Eliane will cover cutting your quilt, binding inner seams, adding a hood or collar, buttons, buttonholes, binding exterior seams and pockets. You won't finish your coat in class, but you will gain a thorough hands-on experience in making your coat. Any steps that aren't finished in class will still be discussed, so you can walk away feeling confident about finishing your coat at home.

MSC003Fri Friday, February 18, 9 a.m. - 4:30 p.m.

MSC003Sat Saturday, February 19, 9 a.m. - 4:30 p.m.

Material Fee: \$20, includes pattern.



ZIPPING THROUGH A QUILTED POUCH

Tina Curtis

Are you scared of zippers? Do you want to make something quilted that's finished by the end of a three-hour class? Bring an orphan block, a mini charm pack, or a cherished fat quarter and turn it into something practical! When making a whole quilt feels overwhelming or your sewjo is low, sometimes a small, quilted project like a quilted bag can help jump-start your motivation to sew. In this class, learn two ways to install zippers and how to create a fully-lined zipper pouch. Plus, you'll leave with a cute, finished project ready to fill up with goodies bought in the vendor hall!

MSC004FriEve Friday, February 18, 6 - 9 p.m.

MSC004Sun Sunday, February 20, 9 a.m. - noon



CRAFTIVISM INTENSIVE: CRAFTING CHANGE

MSC005 Saturday, February 19, 9 a.m. - 4:30 p.m.

Shannon Downey

Interested in going deep on the impact that craft can have on social and political issues? Great! This fun and accessible workshop will introduce you to the long history of art + craft as tools of activism. We will explore the core tenets of building community projects for social change and impact and work together to develop a shared craftivism project. You will walk away with an understanding of craftivism, the information you need to build successful craftivism projects in your communities, a blueprint for moving your brilliant ideas forward, and the experience of having worked with strangers to move through the planning process to actualize a community project.



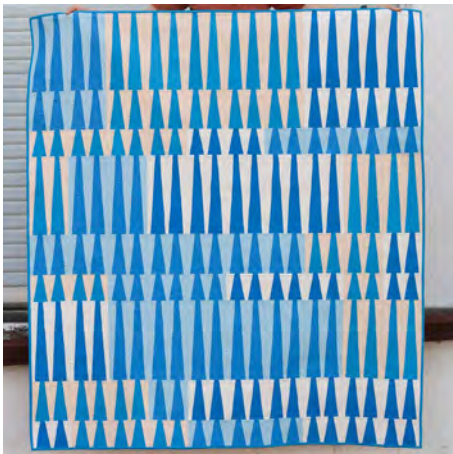
ANASTASIA PATCHWORK BAG

MSC006 Saturday, February 19, 9 a.m. - 4:30 p.m.

Diana Fitzgerald

The Anastasia Bag Workshop combines two classes in one! Diana will begin by teaching the method of Patchwork Sashiko (also available as a class on its own). It is a unique mash-up of Boro, kantha, patchwork, and Sashiko. You'll create a beautiful new textile to use during the second half of class, where you will sew the Anastasia bag. No need to worry about selecting, cutting, and prepping fabric pieces, because it's all provided for you in the kit along with hardware. This class is designed to teach the backpack version, but you can opt to make the handbag version if you wish. The approximate finished size is 9" x 7½" x 4", fully lined with an open pocket and zippered pocket inside.

Material Fee: \$40, includes patchwork sashiko kit, two crewel needles, thread, muslin, interfacing, Anastasia bag pieces cut, fused, and ready to sew, cotton webbing, and hardware.



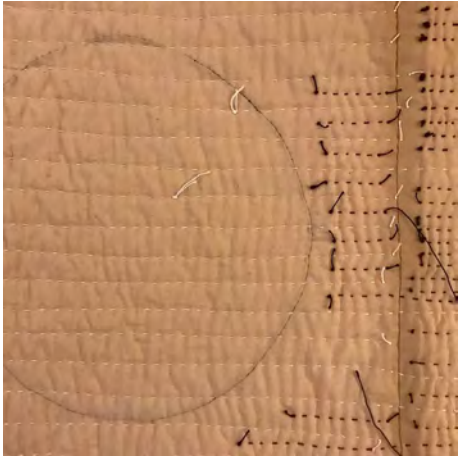
MAKE IT AGAIN

PIE001 Thursday, February 17, 9 a.m. - 4:30 p.m.

Carolyn Friedlander

Sewing through drafts is a great way to get creative ideas flowing and to discover new things. Using Carolyn's Long Leaf quilt pattern, you will explore how sewing the same shapes multiple times in different fabrics and colors can lead to surprising results and new ideas.

Material Fee: \$12, includes paper pattern and paper templates; acrylic templates available for purchase.



PLEATING

Heidi Parkes

This exciting technique is simple in theory: fold the fabric, sew near the crease, and open it up! Yet, in this workshop, Heidi's examples and excitement about the application of this technique will be electric. This workshop will be taught in the handwork room, but most of the techniques can easily be translated to a sewing machine. In this three-hour workshop, Heidi will begin by sharing completed quilts and fabric swatches made with this technique. Then, Heidi will demo some simple variations and students will try them, hands-on. As the class continues, Heidi will demo some more complex variations, and you will make a pleated sampler, innovating as you go. You may be happiest with a yard of solid fabric and a handful of swatches with prints: stripes, florals, polka dots, hand/natural dyes, and anything else that feels playful. The sampler from class could very easily become a quilt top, or a part of a quilt top. *Beware: pleating is easy and addictive, and it may occupy your hands during the whole flight home from QuiltCon . . .

PIE002ThuAM Thursday, February 17, 9 a.m. - noon

PIE002FriEve Friday, February 18, 6 - 9 p.m.



MACHINE-PIECED DOUBLE WEDDING RING

Tara Faughnan

In this workshop you will learn how to sew a scrappy double wedding ring block using a machine rather than the traditional hand piecing. Tara will cover all the tips and tricks for this block, the basics of making and using freezer paper foundations, creating templates, color choices, and the importance of value for creating a successful design.

PIE003 Thursday, February 17, 9 a.m. - 4:30 p.m.



WOVEN RINGS: EXPLORING CURVY PARTIAL SEAMS

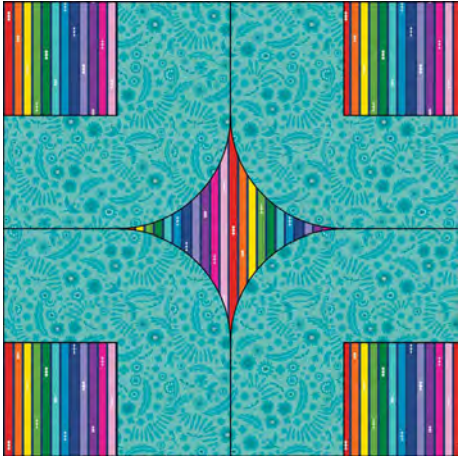
Tighe Flanagan

Level up your patchwork skills with partial seams and gentle curves. This workshop will introduce you to these piecing techniques as you think outside the block using the Ottoman Rings Mini pattern and templates. You will learn to think about fabric grain and bias as you cut your pieces, understand the importance of marking key intersections, and stay organized with a logical order of operations approach. This workshop will get you ready to tackle more complex patchwork, equipping you with additional skills and techniques to add to your quilting arsenal.

PIE004ThuAM Thursday, February 17, 9 a.m. - noon

PIE004ThuEve Thursday, February 17, 6 - 9 p.m.

Material Fee: \$12, includes PDF pattern, printed templates, and handout.



PLAYING WITH PARTIAL SEAMS

Yvonne Fuchs

Partial seams are a wonderful skill to add to your piecing toolbox, and Yvonne will walk you through the steps to feeling confident with 90-degree partial seams and partial seams involving curves. With a little bit of practice and the tips you will learn in this workshop, you will be ready to conquer any quilt on your bucket list! Through low-risk, playful exploration, you will develop confidence sewing partial seams and leave the workshop with a mini quilt top.

Material Fee: \$5, includes full-color printed step out photographs/illustrations and instructions for future reference.

PIE005FriAM Friday, February 18, 9 a.m. - noon
PIE005FriPM Friday, February 18, 1:30 - 4:30 p.m.



GIANT NESTED CURVES

Daisy Aschehoug

Combine different sized curves with improv piecing to create your own unique improv masterpiece! Daisy will cover basic design principles as we discuss various options for piecing the improv slabs, as well as tips for using large and small templates to create the curves. Giant nested curves are a great project for scraps, project off-cuts, leftover blocks, or that fat quarter stack that you've been waiting to cut into. You will leave the workshop with confidence in your curved piecing skills and enough blocks to make a small quilt!

PIE006 Friday, February 18, 9 a.m. - noon



MODERN STRIP PIECING

Cheryl Brickey

This workshop is geared towards beginner quilters and focuses on the techniques of strip piecing and how strip piecing can be used to create modern quilts. Learn Cheryl's top tips for cutting, sewing, and pressing strips for success. You will learn techniques for successful strip piecing including: a scant quarter inch seam allowance, accurate measuring and cutting, and pressing. You will then have time to practice strip piecing to create a modern quilt.

PIE007 Friday, February 18, 6 - 9 p.m.



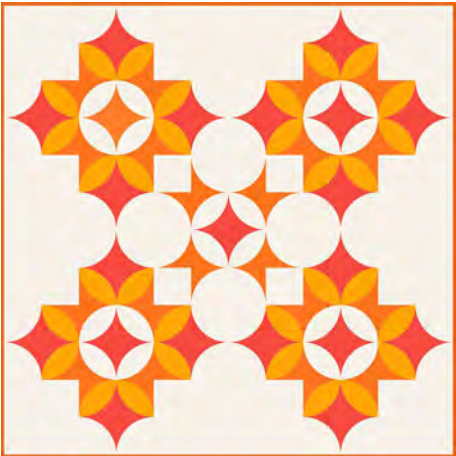
QUILT BY HAND: START TO FINISH

Riane Menardi Morrison

Did you know it's possible to make a quilt entirely by hand, without the help of a machine? It's fun and easier than you might think! In this workshop, you'll make a small quilt entirely by hand, including hand piecing, hand quilting, and binding by hand using the quilt backing. In addition to the overall method, Riane will share her signature hand-quilting process using high-contrast hand quilting and share her favorite tools and materials for handwork. She will cover all techniques in class, but you may need to finish your quilt after the workshop.

Material Fee: \$20, includes fabric for quilt top, backing, and binding, batting, hand-piecing needle and thread, and hand-quilting needle and thread.

PIE008 Saturday, February 19, 9 a.m. - 4:30 p.m.



MASTERING PRECISION CURVES: SESEN

Yvonne Fuchs

Take your piecing to the next level with the Sesen quilt! Through creative use of drunkard's path templates, you will learn how to reduce the number of seams to create stunning and precise curve star blocks and inset curve stars. In this workshop, Yvonne will also cover tips to help you confidently sew 90-degree partial seams. After the workshop, you just might be as hooked on sewing curves as Yvonne is!

Material Fee: \$10, includes Printed pattern.

PIE009 Saturday, February 19, 9 a.m. - 4:30 p.m.



HAPPY MAIL: QUILTED FABRIC POSTCARDS

Sarah Ruiz

Quilted fabric postcards are a fun and fantastic way to use scraps, try new techniques, experiment with color and thread . . . and bring smiles to family and friends around the globe. In this class, Sarah will teach you how to make quilted fabric postcards, provide guidance on different material options and finishing techniques, and share tips and tricks she has learned while making over 200 postcards (so far). You will leave the class with at least 1-2 finished postcards.

PIE010 Sunday, February 20, 9 a.m. - noon



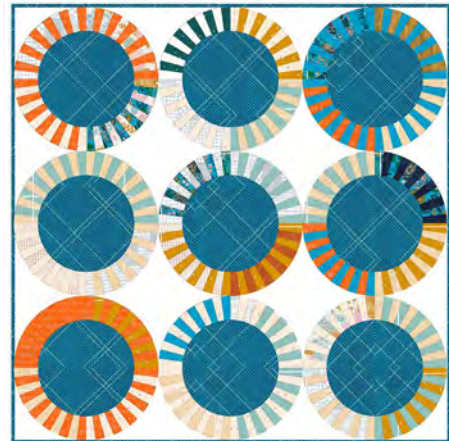
EXPLORING CURVES

Audrey Esarey

Learn to confidently draft and sew complex and irregular curves! In this class, Audrey will teach you how to design, draft, and sew quilt designs with complex curves of different shapes and sizes. You will have plenty of time for discussion and practice. Throughout the class, you will learn tactics for color selection, seam placement, and quilt pattern construction.

Material Fee: \$15, includes "Drafting Complex Curves" booklet and pattern.

PIE011 Sunday, February 20, 9 a.m. - noon



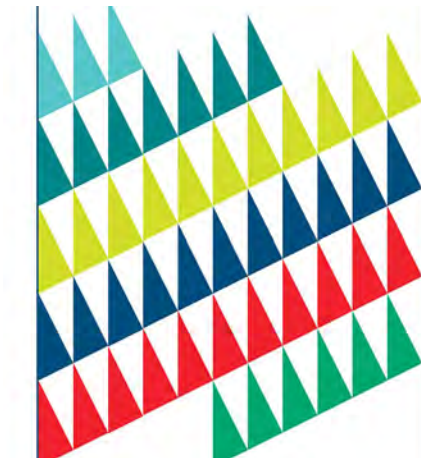
BIG-IMPACT PIECING: GLARE

Latifah Saafir

Tackle large-scale piecing and wedge piecing with Latifah using the new Glare quilt pattern. Glare is a quilt that is all about shining bright and standing tall. It has bold, high impact shapes that will be molded by the personality of your fabric and placement decisions. In this class you will look first at fabric and impact, then spend some time planning your quilt. You will be making the large block version of this quilt with the 24" circles. It is high impact and a single ring makes for a bold baby quilt. You can start any size quilt in this class from baby sized to king sized. Specialty templates are optional. Paper templates are included in the materials fee.

Material Fee: \$17, includes paper pattern and paper templates; acrylic templates available for purchase.

PIE012 Thursday, February 17, 9 a.m. - 4:30 p.m.



OTHERSIDE: MAKING FRIENDS WITH HALF-RECTANGLE TRIANGLES

Latifah Saafir

Half-Rectangle Triangles are a strange beast made easy in the Otherside quilt, by using Latifah's proprietary HuRTy™ template. The HuRTy™ is a multi-size and multi-dimensional Half-Rectangle triangle template set. This unique tool is designed to work as both a cutting and a trimming template, and makes HRT's in both orientations. As one of the first teachers to introduce techniques for making Half-Rectangle Triangles, Latifah is excited to teach you painless half-rectangle triangles using the The HuRTy™ in this class.

Material Fee: \$15, includes printed pattern and paper templates, acrylic templates available for purchase.

PIE013 Friday, February 18, 9 a.m. - 4:30 p.m.



SASHIKO: CORE & ESSENCE

Atsushi Futatsuya

Learn the core and essence of sashiko stitching from a Japanese Sashiko artisan. In sashiko stitching, unique tools such as a long and small-eye needle, a round dish thimble, and a specific thread are used. You will learn how to use those tools with appropriate postures step by step, and aim to learn the rhythm of Sashiko with intensive stitching and practice in the six-hour workshop. Sashiko is not about making one perfect stitch. It is about communicating to the fabric by moving the needles at your own pace. Once you learn how to move the needle, you can enjoy the beautiful results. This is a learning opportunity rather than a "let's do sashiko together" workshop. Anyone who is interested in sashiko is welcome. Prior Sashiko experience is not required. You will learn the core and essence of Sashiko - such as needle movement (運針 - Unshin) and make beautiful sashiko stitches with your rhythm — while Atsushi shares the Sashiko stories.

Material Fee: \$67, includes 145 meters white Sashiko thread, thimble, 3 needles, Indigo Dye Fabric printed pattern, Thread Bobbin Paper, Chalk Pencil, Surprise Item, Threaders, Finger Cots, 8 Sashiko patterns (PDF will be sent after the workshop).

QHA001Thu Thursday, February 17, 9 a.m. - 4:30 p.m.

QHA001Fri Friday, February 18, 9 a.m. - 4:30 p.m.



TIED, TUFTED, & TACKED

Sherri Lynn Wood

Enjoy the vintage look of a hand-finished quilt? Sherri will teach you everything you need to know to hand-tie your quilts quickly and creatively, including yarn, batting, and needle options; how to knot; ruler-free placement; and grid-tying for speed. In addition, learn how to hand-finish your quilt with a fold-over binding or a reverse fold-over facing for a knife-edge finish.

QHA002FriAM Friday, February 18, 9 a.m. - noon

QHA002FriPM Friday, February 18, 1:30 - 4:30 p.m.



HAND ACCENTED

Cassandra Beaver

Combine hand and machine quilting to achieve the distinctive design and texture of handwork in a fraction of the time. In this class, you will start with a hand running stitch on a fabric panel that has been machine quilted. Then you will go a step further by exploring embroidery stitches that are conducive to quilting. A variety of thread colors and weights will be incorporated into your project.

QHA003FriPM Friday, February 18, 1:30 - 4:30 p.m.

QHA003SatAM Saturday, February 19, 9 a.m. - noon



IMPROV HAND QUILTING

Heidi Parkes

This workshop is both conceptual and technical, beginning with a discussion of quilts Heidi has completed using the improvisational hand-quilting technique. Stitch density, exposed or hidden knots, overlapping lines of quilting, and color choices will be expanded upon. Heidi loves to quilt with perle size 8 thread for its high visibility and strength. You can work with an existing quilt top or a 'wholecloth' single piece of fabric. She will cover basting, quilting with a tabletop and a heavy book to create tension, hand positioning, hand care, thimble use, and a variety of ways to balance planning with improv. You will not use pens to 'mark,' your fabric, but will learn a few tricks to anticipate your stitching. Heidi is an expert at creating areas of visual interest and activating the quilt top with the quilting functioning like a 'drawing' on the surface of the fabric. You will not complete your quilt in class, but you will get a solid foundation of improvisation and hand quilting.

QHA004 Saturday, February 19, 9 a.m. - 4:30 p.m.



SASHIKO: APPLICATION & PRACTICE

Atsushi Futatsuya

After learning the core & essence of Sashiko - 運針 Unshin, the possibility of Sashiko is infinite. In this workshop, we will go through the various aspects of Sashiko, such as Hitomezashi and stitching for mending. Atsushi will provide a good amount of information to enjoy mending and Hitomezashi, and then you can work on the project at your own pace, enhancing the learning from the Core & Essence Workshop. He will also talk about Kofu (vintage fabric), Boro, and invisible mending. The workshop image is a sample of Hitomezashi and Sashiko by participants of both workshops.

QHA005 Saturday, February 19, 9 a.m. - 4:30 p.m.

*Material Fee: \$50, includes 1 skein of Sashiko Thread, 145 meter - color of choice from 15 colors, 1 skein of Yokota Sashiko Thread 40 meter - color of choice from 5 colors, 1 Fabric Set For Hitomezashi (specifically prepared for the workshop), 1 Set for practicing the pattern preparation & mending, 1 Thread bobbin Paper, 1 small surprise Item, 1 Threader, 2 Finger Cots, PDF of Graph Paper. *In addition to the Supply Set above, the participants are required to bring these items from the previous Sashiko Workshop (supply available for purchase, if they need them): Sashiko Needle, 51.5mm, A round shape thimble, Cotton Basting Thread, and White Chalk Pencil.*

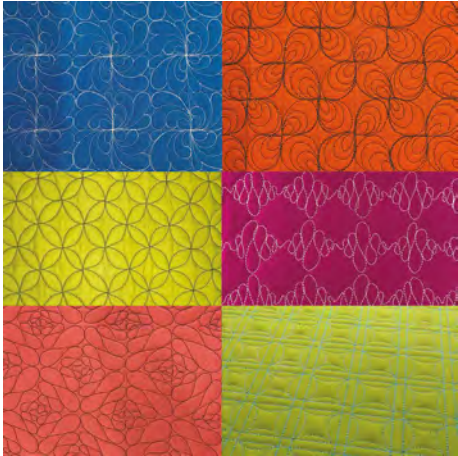


HANDWORK REVISITED

Heidi Parkes

Heidi first launched this workshop at QuiltCon in 2017, and the ripple effect has been extraordinary. This workshop will again revisit handwork, focusing on #VisibleHandPiecing. You will learn a selection of stitches and knots for hand piecing and appliqué that will show off your hand stitching instead of hiding it. These techniques allow the seam to act as a focal point, drawing the viewers to the lines in the quilt, as opposed to focusing the eye on the color shift of the shapes in a quilt! This 3-hour workshop is focused on technique, and you will make a sampling of stitches at your own pace. Heidi will also offer many interesting details about the techniques, and the stories of how she learned them. With Heidi being a conceptual artist and meaning-maker at heart, know that in spite of our technical focus, you will likely fall in love with the hidden meanings behind a whip stitch, the romance of a slip knot, and the unapologetic effects of a millimeter shift in the traditional ladder stitch.

QHA006 Sunday, February 20, 9 a.m. - noon



QUILTING THE GRID

Joanna Marsh

Do you love the look of precise quilting designs, but can't be bothered with ruler-work? In this class, you will learn how to use a grid to create precision free-motion quilting that mimics the look of computerized designs or ruler-work. Joanna will guide you through familiar free-motion motifs and show you how to quilt them using a grid as a guide. You will learn how to create new designs using this method and easily resize them for different effects. You should be comfortable/familiar with longarm quilting and free-motion.

QLA001ThuAM Thursday, February 17, 9 a.m. - noon

QLA001SatAM Saturday, February 19, 9 a.m. - noon



GRAFFITI QUILTING

Karlee Porter

Graffiti quilting is the act of taking many different motifs and combining them together into one unified quilt. Learn the ins and outs of individual elements, how and when to use them, and how to create a unified and completely unique, one-of-a-kind wholecloth quilt. Your free-motion quilting skills will be expanded and sharpened to overflow your tool box of quilting motifs! This is a great opportunity to let loose, think outside of the traditional quilt block, and really just enjoy the journey of free-motion quilting. This class, accompanied by Karlee's best-selling book *Graffiti Quilting*, will set you on a course for solid quilting success for years to come. Whether you are a professional quilter looking to expand your offering, or a novice quilter just needing that little extra nudge to explore new avenues, this course truly has something for everyone! Karlee will show you many examples of how to use graffiti quilting on both modern and traditional quilts, whether functional or wall hangings. This class is taught on a longarm quilting machine.

QLA002ThuAM Thursday, February 17, 9 a.m. - noon

QLA002ThuPM Thursday, February 17, 1:30 - 4:30 p.m.

QLA002ThuEve Thursday, February 17, 6 - 9 p.m.

Material Fee: \$25, includes "Graffiti Quilting: A Simple Guide to Complex Designs" by Karlee Porter.

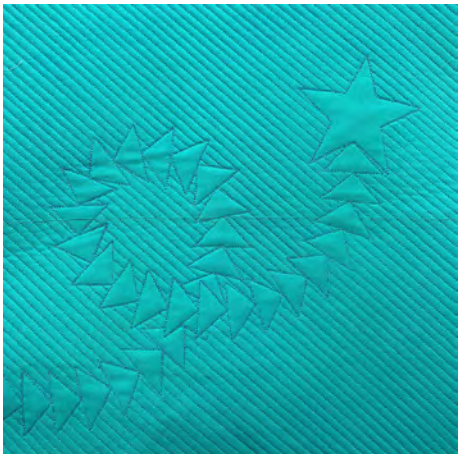
GHOST SHAPES

Joanna Marsh

Unlock your modern quilting creativity! This workshop focuses on developing "ghost shapes" or designs and quilting them. Quilting ghost shapes is using shapes and outlines to create secondary quilting designs that enhance and support the overall design of your quilt. You will learn how to start from an inspiration piece or idea, how to make the quilting plan, and how to quilt it. Topics include ghost shape or design selection, how to make templates if you need them, and thread considerations. Sample templates will be available for your use. You should be comfortable/proficient with longarm quilting and familiar with using longarm rulers.

QLA003ThuPM Thursday, February 17, 1:30 - 4:30 p.m.

QLA003SatPM Saturday, February 19, 1:30 - 4:30 p.m.





FEATHERS & VINES

Tia Curtis

Have you seen the gorgeous quilting on heirloom quilts and been amazed by the beautiful feathers and vines quilted with such perfection? Are you ready to try feathers and vines for yourself but give them a more updated look? Come join Tia as she unlocks the mysteries behind these wonderful quilting elements. She will demonstrate several techniques to make fabulous feathers and vines on your next quilt. She will also cover how to quilt tiny feathers for sashings, large luscious feathers to fill up wide outer borders, as well as wreaths and a couple of blocks. This is a free-hand quilting class, no templates are required, but a straight longarm quilting ruler may be helpful to quilt in the backgrounds. You will leave with at least six different feather and vine samples as well as a handout filled with more examples for reference in future quilt designs. This class is taught on a longarm quilting machine.

QLA004 Thursday, February 17, 6 - 9 p.m.



FREE-MOTION FILLERS

Karlee Porter

There are so many wonderful ways you can quilt your quilt top! This class will give you a deep dive into figuring out how to fill in large spaces, background areas, or do free-motion designs that are meant to span from edge to edge of your quilt top. You will explore some geometric designs, as well as more floral and flourish-y ones. This is a great course to take if you want to learn more about scale, appropriate overlapping in your quilting motif, or if you are just getting dang sick of using paper pantographs. Free-motion fillers are typically repeated, so this course will show you how to identify where to repeat your motif, as well as how to decipher the overall direction of your filler designs. This class is taught on a longarm quilting machine.

QLA005FriAM Friday, February 18, 9 a.m. - noon

QLA005FriPM Friday, February 18, 1:30 - 4:30 p.m.

QLA005FriEve Friday, February 18, 6 - 9 p.m.

Material Fee: \$25, includes "Hand Lettered Quilts" by Karlee Porter.



GRIDWORK REIMAGINED

Jodi Robinson

Most machine quilters have stitched gridwork in many of its different forms: grids, crosshatching, curved cross-hatching, and adding design elements to a grid. In this class, Jodi will share some very unique and different design ideas to change up the common grid. Learn to look at grids in a whole new way, and to create unique gridwork designs that will take your quilting up a notch. You **MUST** be comfortable doing ruler-work on a longarm quilting machine.

QLA006FriAM Friday, February 18, 9 a.m. - noon

QLA006Sun Sunday, February 20, 9 a.m. - noon

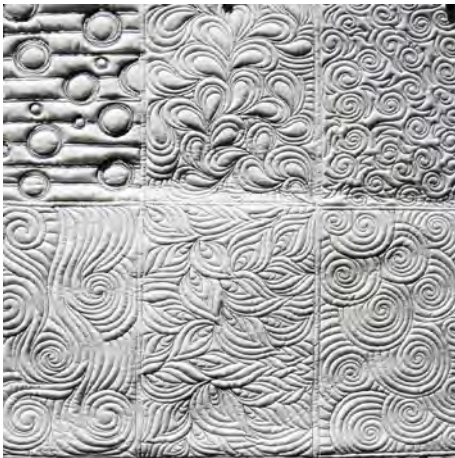


RULERWORK ELEVATED

Jodi Robinson

If you love doing rulerwork, then be sure to join Jodi in this class where she will take using rulers to the next level. Do you look at quilts in shows and wonder HOW on earth did they do that? Well, the truth is, if you take a closer look, and actually dissect a very complicated looking design, it often is not difficult to actually stitch; it's more about having patience, spending the time, and learning to stitch with accuracy and precision. You **MUST** be proficient and comfortable stitching with rulers. This workshop is taught on a longarm quilting machine.

QLA007 Friday, February 18, 1:30 - 4:30 p.m.



MODERN TEXTURES

Tia Curtis

Are you ready to fill your quilting toolbox with a plethora of quilting designs perfect for your next quilt? Sometimes we have to take a different approach when we quilt a modern quilt. All that negative space can cause quilt paralysis. Let Tia show you how to implement a series of designs that range from simple to intricate. These designs will make your next quilt a breeze. You will learn at least 20 new designs that range from fairly simple to quite detailed as well as some techniques to break up that negative space into smaller spaces. This class is taught on a longarm quilting machine.

QLA008SatAM Saturday, February 19, 9 a.m. - noon

QLA008SatPM Saturday, February 19, 1:30 - 4:30 p.m.



FEATHERS & FLOURISHES

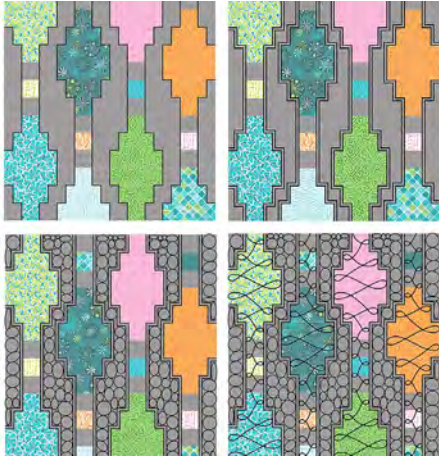
Karlee Porter

Adding feathers and flourishes to your quilt tops is such a wonderful way to add gorgeous texture and depth! This workshop will give you an in-depth look and exploration into all things feather- and flourish-related. Karlee will break down each motif into its simplest form, identify the anatomy of those motifs, and teach how to embellish them to the moon and back. By the end of this workshop, people might just mistake your free-motion feathers for being computerized! Not only will Karlee discuss the feather motif in its most traditional sense, but she will also show unique ways to use those motifs in more modern and embellished avenues. If you're getting tired of using rulers, stitching in the ditch, or being afraid of quilting anything but the stipple, this class is the cure to really get you out of the box! This class is taught on a longarm quilting machine.

QLA009SatEve Saturday, February 19, 6 - 9 p.m.

QLA009Sun Sunday, February 20, 9 a.m. - noon

Material Fee: \$25, includes "Graffiti Quilting: A Simple Guide to Complex Designs" by Karlee Porter.



HOW TO MAKE A QUILTING PLAN

Christa Watson

This class is part lecture, part hands-on design workshop with an emphasis on domestic machine quilting. After discussing the often-asked question, "How do I quilt it?" you will practice sketching quilting motifs on paper, then learn strategies to apply those designs to an actual quilt top. You will have a chance to create several different quilting plans using images of your own quilts printed on paper, as well as learning how to create quilting plans for a wide variety of quilt designs. If time permits, Christa will also discuss options for designing a quilting plan as a group, using some of your quilt tops as examples. This is a no-sew workshop.



QUILTING STRATEGY

Carolyn Friedlander

This class is all about your design strategy for quilting. Carolyn will spend the entire class working through design ideas and solutions for all different types of quilts. You are encouraged to bring one quilt top that will be a part of the class discussion. In looking at your actual works, you will gain a varied perspective of strategy and design implementation. This is a no-sew workshop.

QP001 *Thursday, February 17, 6 - 9 p.m.*

QP002SatPM *Saturday, February 19, 1:30 - 4:30 p.m.*

QP002SatEve *Saturday, February 19, 6 - 9 p.m.*

FACULTY



DAISY ASCHEHOUG
@warmfolk



BRIMFIELD AWAKENING
@brimfieldawakening



CASSANDRA BEAVER
@cassandra.beaver



ELIANE BERGMANN
@patchworkandpoodles



CARRIE BLOOMSTON
@carriebloomston



SUE BOUCHARD
@sbbouchard



ANGELA BOWMAN
@angelabdesign



CHERYL BRICKEY
@meadowmistdesigns



CHRISTINA CAMELI
@afewscraps



TIA CURTIS
@tiacurtisquilts



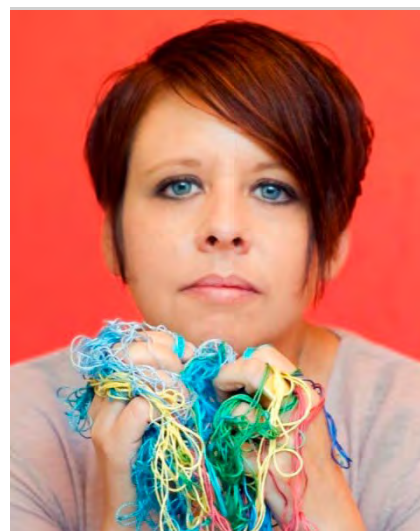
TINA CURTIS
@tina1802



MELISSA DE LEON MASON
@quiltallthethings



BRIGIT DERMOTT
@brigitgail



SHANNON DOWNEY
@badasscrossstitch



TERESA DURYEA WONG
@third_floor_quilts



AUDREY ESAREY
@cottonandbourbon



TARA FAUGHNAN
@tarafaughnan



DIANA FITZGERALD
@banjoflannel



TIGHE FLANAGAN
@tigheflanagan



MARY FON
@yomaryfons



CAROLYN FRIEDLANDER
@carolynfriedlander



YVONNE FUCHS
@quiltingjetgirl



ATSUSHI FUTATSUYA
@sashikostory



KERRY GOULDER
@kidgiddy



LAURA HARTRICH
@laurahartrich



DAVID OWEN HASTINGS
@davidowenhastings



SUSAN HUDSON



LAURA LOEWEN
@quiltfortco



JOANNA MARSH
@kustomkwilts



RIANE MENARDI MORRISON
@riane.elise



HEIDI PARKES
@heidi.parkes



JESSICA PLUNKETT
@maeberrysquare



KARLEE PORTER
@karleeporterdesign



JODI ROBINSON
@jodirdesigns



SARAH RUIZ
@saroy



LATIFAH SAAFIR
@latifahsaafirstudios



JENNIFER SAMPOU
@jennifersampou



MARIA SHELL
@talesofastitcher



STEPH SKARDAL
@stephskardal



BLAIR STOCKER
@blairs



SARA TRAIL
@sjsacademy



CHRISTA WATSON
@christaquilts



BETZ WHITE
@betz_white



KITTY WILKIN
@nightquilter



GERALDINE WILKINS
@livingwaterquilter



SHERRI LYNN WOOD
@sherrilynnwood



VERUSCHKA ZARATE
@prideandjoyquilting

INDEX

Daisy Aschehoug

IMP008 Pebble Pop Improv
IMP010 Swoopies
LE26 Adventures in Quilt Math
PIE006 Giant Nested Curves

Brimfield Awakening

FDP004 Brimfield Meadows
FDP008ThuPM Fussy Cutting for EPP
FDP008ThuEve Fussy Cutting for EPP

Cassandra Beaver

DSMQ002ThuPM Matchstick Quilting
DSMQ002ThuEve Matchstick Quilting
FDP007 Irregular FPP Shapes
LE01 Stashed!
LE10 Beyond Color: Creating Dramatic Quilts
QHA003FriPM Hand Accented
QHA003SatAM Hand Accented

Eliane Bergmann

MSC003Fri Kick Start Your Quilt Coat
MSC003Sat Kick Start Your Quilt Coat

Carrie Bloomston

LE11 Letting Go of Control Through Fabric Design
LE25 Trusting Your Color Instincts

Sue Bouchard

FIN001 All About Binding

Angela Bowman

FDP002 Portraiture in FPP

Cheryl Brickey

DES002ThuAM EQ8 for Beginners
DES002SatEve EQ8 for Beginners
DES007 All About Using Fabrics in EQ8
DES008 Modern Quilt Design using EQ8
PIE007 Modern Strip Piecing

Christina Cameli

DSMQ003ThuEve Quilted Compositions
DSMQ003Sun Quilted Compositions
DSMQ006 Alt Grids for FMQ
DSMQ009 FMQ Fluidity
LE20 The 5 Skills of FMQ

Tia Curtis

DSMQ007FriEve Scrappy QAYG
DSMQ007Sun Scrappy QAYG
QLA004 Feathers & Vines
QLA008SatAM Modern Textures
QLA008SatPM Modern Textures

Tina Curtis

MSC004FriEve Zippering Through A Quilted Pouch
MSC004Sun Zippering Through A Quilted Pouch

Melissa de Leon Mason

DES006FriAM Quilting with Gradients
DES006SatAM Quilting with Gradients
FDP003ThuEve Piecing with Templates
FDP003SatEve Piecing with Templates

FDP005FriEve FPP Bootcamp
 FDP005Sun FPP Bootcamp
 LE15 Appropriation or Appreciation: Navigating
 Cultural Minefields

Brigit Dermott

DES001Sun Quilt Design with Origami Paper Collage
 DES001ThuAM Quilt Design with Origami Paper Collage
 FDP009ThuEve Take On FPP with the NY Beauty
 FDP009SatEve Take On FPP with the NY Beauty

Shannon Downey

LE16 Craftivism: Crafting Social Change
 MSC002 Craftivism: Crafting for Impact
 MSC005 Craftivism Intensive: Crafting Change

Teresa Duryea Wong

LE05 Hello Modern Art, Meet Antique Quilts
 LE17 Activist Art: The SJSA Remembrance Project

Audrey Esarey

DES004ThuEve Drafting Abstract Geometric Quilts
 DES004FriEve Drafting Abstract Geometric Quilts
 PIE011 Exploring Curves

Tara Faughnan

DES010FriEve Creating Color Palettes
 DES010Sun Creating Color Palettes
 DES011 Exploring Value in the Hourglass Quilt
 PIE003 Machine-Pieced Double Wedding Ring

Diana Fitzgerald

IMP004ThuPM Patchwork Sashiko
 IMP004ThuEve Patchwork Sashiko
 MSC006 Anastasia Patchwork Bag

Tighe Flanagan

LE13 Strategies for Sewing Complex Designs
 LE21 Intro to Islamic Geometry for Quilters
 PIE004ThuAM Woven Rings: Exploring Curvy Partial Seams
 PIE004ThuEve Woven Rings: Exploring Curvy Partial Seams

Mary Fons

LE04 Quilts On The Runway: A History
 LE08 Unconventional & Unexpected: An Interview with
 Roderick Kiracofe
 LE23 Sold: Quilts In The Art World
 TOURThu Special Exhibits Tour: Thursday
 TOURFri Special Exhibits Tour: Friday
 TOURSat Special Exhibits Tour: Saturday
 TOURSun Special Exhibits Tour: Sunday

Carolyn Friedlander

APP100 Accents and Needle-turn Appliqué with Bow
 PIE001 Make It Again
 QP002SatPM Quilting Strategy
 QP002SatEve Quilting Strategy

Yvonne Fuchs

PIE005FriAM Playing with Partial Seams
 PIE005FriPM Playing with Partial Seams
 PIE009 Mastering Precision Curves: Sesen

Atsushi Futatsuya

QHA001Thu Sashiko: Core & Essence
 QHA001Fri Sashiko: Core & Essence
 QHA005 Sashiko: Application & Practice

Kerry Goulder

DES009FriEve Learn To Design Pixel Quilt Blocks
 DES009SatEve Learn To Design Pixel Quilt Blocks

Laura Hartrich

LE14 Liner Notes and Labels: Documenting Your Work

David Owen Hastings

IMP002ThuAM Mini Mid-Mod Quilts
 IMP002ThuPM Mini Mid-Mod Quilts
 IMP007 Modern Abstract Quilts
 LE24 Minimal Design, Maximum Impact

Susan Hudson

LE02 Navajo Quiltmakers: Honoring our Ancestors
 TOURThu Special Exhibits Tour: Thursday
 TOURFri Special Exhibits Tour: Friday
 TOURSat Special Exhibits Tour: Saturday
 TOURSun Special Exhibits Tour: Sunday

Laura Loewen

IMP009FriEve Stepping Into Improv
 IMP009Sun Stepping Into Improv
 LE27 A New Era of Modern Quilting

Joanna Marsh

DES005 Illustrator for Quilt Design
 FDP001 Choose Your EPP Adventure
 QLA001ThuAM Quilting the Grid
 QLA001SatAM Quilting the Grid
 QLA003ThuPM Ghost Shapes
 QLA003SatPM Ghost Shapes

Riane Menardi Morrison

PIE008 Quilt by Hand: Start to Finish

Heidi Parkes

LE06 Wellness for Quilters
 LE09 Improv Life, Improv Quilts
 PIE002ThuAM Pleating
 PIE002FriEve Pleating
 QHA004 Improv Hand Quilting
 QHA006 Handwork Revisited
 YOThu Daily Yoga: Thursday
 YOFri Daily Yoga: Friday
 YOSat Daily Yoga: Saturday
 YOSun Daily Yoga: Sunday

Jessica Plunkett

LE03 Redefining Perfect
 LE12 Teach It: The Legacy of Quilting

Karlee Porter

DSMQ008SatAM Graffiti Quilting on a Domestic Machine
 DSMQ008SatPM Graffiti Quilting on a Domestic Machine
 QLA002ThuAM Graffiti Quilting
 QLA002ThuPM Graffiti Quilting
 QLA002ThuEve Graffiti Quilting
 QLA005FriAM Free-Motion Fillers
 QLA005FriPM Free-Motion Fillers
 QLA005FriEve Free-Motion Fillers
 QLA009SatEve Feathers & Flourishes
 QLA009Sun Feathers & Flourishes

Jodi Robinson

IMP001 Improv Wholecloth Quilt
 QLA006FriAM Gridwork Reimagined
 QLA006Sun Gridwork Reimagined
 QLA007 Rulerwork Elevated

Sarah Ruiz

LE22 100 Days to Creative Bliss
 PIE010 Happy Mail: Quilted Fabric Postcards

Latifah Saafir

LE19 Finding My Creative Identity: Standing Tall as a Quilter
 PIE012 Big-Impact Piecing: Glare
 PIE013 Otherside: Making Friends with Half-Rectangle Triangles

Jennifer Sampou

LE28 Spark Your Creative Mojo

Maria Shell

IMP005ThuEve Log Cabin Circles
 IMP005SatEve Log Cabin Circles
 IMP006 Bits & Pieces Improv
 LE18 Building Community Through Quilts

Steph Skardal

DES003ThPM Beginning Procreate Quilt Design
 DES003ThEve Beginning Procreate Quilt Design
 DES012SatAM Intermediate Procreate Quilt Design
 DES012SatEve Intermediate Procreate Quilt Design

Blair Stocker

EMB002FriAM Woven Embroidery Sampler
 EMB002SatEve Woven Embroidery Sampler
 EMB003FriEve Snowflake Embroidered Gingham Star
 EMB003Sun Snowflake Embroidered Gingham Star

Sara Trail

DES013SatPM Activist Quilting
 DES013SatEve Activist Quilting
 DES013Sun Activist Quilting
 LE17 Activist Art: The SJSA Remembrance Project

Christa Watson

DSMQ005 Quilting Between the Lines: Walking Foot
 DSMQ010 Quilting Between the Lines: Free Motion
 QP001 How to Make a Quilting Plan

Betz White

EMB001ThuAM Just One Word: Dimensional Appliqué Embroidery
 EMB001ThuEve Just One Word: Dimensional Appliqué Embroidery
 EMB004FriEve Elevating Patchwork with Hand Embroidery
 EMB004SatEve Elevating Patchwork with Hand Embroidery

Kitty Wilkin

DES014SatPM Quilt Your Life: Plan for Success
 DES014Sun Quilt Your Life: Plan for Success
 MSC001ThuPM Quilt Photography from Every Angle
 MSC001FriPM Quilt Photography from Every Angle

Geraldine Wilkins

DSMQ001 Clambake: A Ruler Quilting Design Feast
 DSMQ004 Power Curves: Serpentine Ruler Designs
 DSMQ011 Going in Circles: A Ruler-Quilting Compass

Sherri Lynn Wood

IMP003 Field of Jeans
 QHA002FriAM Tied, Tufted & Tacked
 QHA002FriPM Tied, Tufted & Tacked

Veruschka Zarate

FDP006 Mastering Foundation Paper Piecing

Appliqué

APP100 Accents and Needle-turn Appliqué with Bow with Carolyn Friedlander

Design

DES001ThuAM Quilt Design with Origami Paper Collage with Brigit Dermott
 DES001Sun Quilt Design with Origami Paper Collage with Brigit Dermott
 DES002ThuAM EQ8 for Beginners with Cheryl Brickey
 DES002SatEve EQ8 for Beginners with Cheryl Brickey
 DES003ThPM Beginning Procreate Quilt Design with Steph Skardal
 DES003ThEve Beginning Procreate Quilt Design with Steph Skardal
 DES004ThuEve Drafting Abstract Geometric Quilts with Audrey Esarey
 DES004FriEve Drafting Abstract Geometric Quilts with Audrey Esarey
 DES005 Illustrator for Quilt Design with Joanna Marsh
 DES006FriAM Quilting with Gradients with Melissa de Leon Mason
 DES006SatAM Quilting with Gradients with Melissa de Leon Mason
 DES007 All About Using Fabrics in EQ8 with Cheryl Brickey
 DES008 Modern Quilt Design using EQ8 with Cheryl Brickey
 DES009FriEve Learn To Design Pixel Quilt Blocks with Kerry Goulder
 DES009SatEve Learn To Design Pixel Quilt Blocks with Kerry Goulder
 DES010FriEve Creating Color Palettes with Tara Faughnan
 DES010Sun Creating Color Palettes with Tara Faughnan
 DES011 Exploring Value in the Hourglass Quilt with Tara Faughnan

DES012SatAM Intermediate Procreate Quilt Design with Steph Skardal
 DES012SatEve Intermediate Procreate Quilt Design with Steph Skardal
 DES013SatPM Activist Quilting with Sara Trail
 DES013SatEve Activist Quilting with Sara Trail
 DES013Sun Activist Quilting with Sara Trail
 DES014SatPM Quilt Your Life: Plan for Success with Kitty Wilkin
 DES014Sun Quilt Your Life: Plan for Success with Kitty Wilkin

Domestic Machine Quilting

DSMQ001 Clambake: A Ruler Quilting Design Feast with Geraldine Wilkins
 DSMQ002ThuPM Matchstick Quilting with Cassandra Beaver
 DSMQ002ThuEve Matchstick Quilting with Cassandra Beaver
 DSMQ003ThuEve Quilted Compositions with Christina Cameli
 DSMQ003Sun Quilted Compositions with Christina Cameli
 DSMQ004 Power Curves: Serpentine Ruler Designs with Geraldine Wilkins
 DSMQ005 Quilting Between the Lines: Walking Foot with Christa Watson
 DSMQ006 Alt Grids for FMQ with Christina Cameli
 DSMQ007FriEve Scrappy QAYG with Tia Curtis
 DSMQ007Sun Scrappy QAYG with Tia Curtis
 DSMQ008SatAM Graffiti Quilting on a Domestic Machine with Karlee Porter
 DSMQ008SatPM Graffiti Quilting on a Domestic Machine with Karlee Porter

DSMQ009	FMQ Fluidity with Christina Cameli
DSMQ010	Quilting Between the Lines: Free Motion with Christa Watson
DSMQ011	Going in Circles: A Ruler-Quilting Compass with Geraldine Wilkins

Embroidery

EMB001ThuAM	Just One Word: Dimensional Appliqué Embroidery with Betz White
EMB001ThuEve	Just One Word: Dimensional Appliqué Embroidery with Betz White
EMB002FriAM	Woven Embroidery Sampler with Blair Stocker
EMB002SatEve	Woven Embroidery Sampler with Blair Stocker
EMB003FriEve	Snowflake Embroidered Gingham Star with Blair Stocker
EMB003Sun	Snowflake Embroidered Gingham Star with Blair Stocker
EMB004FriEve	Elevating Patchwork with Hand Embroidery with Betz White
EMB004SatEve	Elevating Patchwork with Hand Embroidery with Betz White

Foundation Paper Piecing (Including EPP)

FDP001	Choose Your EPP Adventure with Joanna Marsh
FDP002	Portraiture in FPP with Angela Bowman
FDP003ThuEve	Piecing with Templates with Melissa de Leon Mason
FDP003SatEve	Piecing with Templates with Melissa de Leon Mason
FDP004	Brimfield Meadows with Brimfield Awakening
FDP005FriEve	FPP Bootcamp with Melissa de Leon Mason
FDP005Sun	FPP Bootcamp with Melissa de Leon Mason

FDP006	Mastering Foundation Paper Piecing with Veruschka Zarate
FDP007	Irregular FPP Shapes with Cassandra Beaver
FDP008ThuPM	Fussy Cutting for EPP with Brimfield Awakening
FDP008ThuEve	Fussy Cutting for EPP with Brimfield Awakening
FDP009ThuEve	Take On FPP with the NY Beauty with Brigit Dermott
FDP009SatEve	Take On FPP with the NY Beauty with Brigit Dermott

Finishing

FIN001	All About Binding with Sue Bouchard
--------	--

Improvisational Piecing/Design

IMP001	Improv Wholecloth Quilt with Jodi Robinson
IMP002ThuAM	Mini Mid-Mod Quilts with David Owen Hastings
IMP002ThuPM	Mini Mid-Mod Quilts with David Owen Hastings
IMP003	Field of Jeans with Sherri Lynn Wood
IMP004ThuPM	Patchwork Sashiko with Diana Fitzgerald
IMP004ThuEve	Patchwork Sashiko with Diana Fitzgerald
IMP005ThuEve	Log Cabin Circles with Maria Shell
IMP005SatEve	Log Cabin Circles with Maria Shell
IMP006	Bits & Pieces Improv with Maria Shell
IMP007	Modern Abstract Quilts with David Owen Hastings
IMP008	Pebble Pop Improv with Daisy Aschehoug

IMP009FriEve Stepping Into Improv
with Laura Loewen
IMP009Sun Stepping Into Improv
with Laura Loewen
IMP010 Swoopies
with Daisy Aschehoug

Lectures

LE01 Stashed!
with Cassandra Beaver
LE02 Navajo Quiltmakers: Honoring our Ancestors
with Susan Hudson
LE03 Redefining Perfect
with Jessica Plunkett
LE04 Quilts On The Runway: A History
with Mary Fons
LE05 Hello Modern Art, Meet Antique Quilts
with Teresa Duryea Wong
LE06 Wellness for Quilters
with Heidi Parkes
LE07 Panel Discussion: Valuing Our Work
LE08 Unconventional & Unexpected: An Interview with
Roderick Kiracofe with Mary Fons
LE09 Improv Life, Improv Quilts
with Heidi Parkes
LE10 Beyond Color: Creating Dramatic Quilts
with Cassandra Beaver
LE11 Letting Go of Control Through Fabric Design
with Carrie Bloomston
LE12 Teach It: The Legacy of Quilting
with Jessica Plunkett
LE13 Strategies for Sewing Complex Designs
with Tighe Flanagan
LE14 Liner Notes and Labels: Documenting Your Work
with Laura Hartrich
LE15 Appropriation or Appreciation: Navigating Cultural
Minefields with Melissa de Leon Mason
LE16 Craftivism: Crafting Social Change
with Shannon Downey
LE17 Activist Art: The SJSA Remembrance Project
with Sara Trail

LE18 Building Community Through Quilts
with Maria Shell
LE19 Finding My Creative Identity: Standing Tall as a Quilter
with Latifah Saafir
LE20 The 5 Skills of FMQ
with Christina Cameli
LE21 Intro to Islamic Geometry for Quilters
with Tighe Flanagan
LE22 100 Days to Creative Bliss
with Sarah Ruiz
LE23 Sold: Quilts In The Art World
with Mary Fons
LE24 Minimal Design, Maximum Impact
with David Owen Hastings
LE25 Trusting Your Color Instincts
with Carrie Bloomston
LE26 Adventures in Quilt Math
with Daisy Aschehoug
LE27 A New Era of Modern Quilting
with Laura Loewen
LE28 Spark Your Creative Mojo
with Jennifer Sampou
LEAWA Awards Ceremony

Miscellaneous

MSC001ThuPM Quilt Photography from Every Angle
with Kitty Wilkin
MSC001FriPM Quilt Photography from Every Angle
with Kitty Wilkin
MSC002 Craftivism: Crafting for Impact
with Shannon Downey
MSC003Fri Kick Start Your Quilt Coat
with Eliane Bergmann
MSC003Sat Kick Start Your Quilt Coat
with Eliane Bergmann
MSC004FriEve Zipping Through A Quilted Pouch
with Tina Curtis
MSC004Sun Zipping Through A Quilted Pouch
with Tina Curtis
MSC005 Craftivism Intensive: Crafting Change
with Shannon Downey

MSC006	Anastasia Patchwork Bag with Diana Fitzgerald
Piecing	
PIE001	Make It Again with Carolyn Friedlander
PIE002ThuAM	Pleating with Heidi Parkes
PIE002FriEve	Pleating with Heidi Parkes
PIE003	Machine-Pieced Double Wedding Ring with Tara Faughnan
PIE004ThuAM	Woven Rings: Exploring Curvy Partial Seams with Tighe Flanagan
PIE004ThuEve	Woven Rings: Exploring Curvy Partial Seams with Tighe Flanagan
PIE005FriAM	Playing with Partial Seams with Yvonne Fuchs
PIE005FriPM	Playing with Partial Seams with Yvonne Fuchs
PIE006	Giant Nested Curves with Daisy Aschehoug
PIE007	Modern Strip Piecing with Cheryl Brickey
PIE008	Quilt by Hand: Start to Finish with Riane Menardi Morrison
PIE009	Mastering Precision Curves: Sesen with Yvonne Fuchs
PIE010	Happy Mail: Quilted Fabric Postcards with Sarah Ruiz
PIE011	Exploring Curves with Audrey Esarey
PIE012	Big-Impact Piecing: Glare with Latifah Saafir
PIE013	Otherside: Making Friends with Half-Rectangle Triangles with Latifah Saafir

Quilting by Hand

QHA001Thu	Sashiko: Core & Essence with Atsushi Futatsuya
QHA001Fri	Sashiko: Core & Essence with Atsushi Futatsuya
QHA002FriAM	Tied, Tufted, & Tacked with Sherri Lynn Wood
QHA002FriPM	Tied, Tufted, & Tacked with Sherri Lynn Wood
QHA003FriPM	Hand Accented with Cassandra Beaver
QHA003SatAM	Hand Accented with Cassandra Beaver
QHA004	Improv Hand Quilting with Heidi Parkes
QHA005	Sashiko: Application & Practice with Atsushi Futatsuya
QHA006	Handwork Revisited with Heidi Parkes

Quilting on a Longarm

QLA001ThuAM	Quilting the Grid with Joanna Marsh
QLA001SatAM	Quilting the Grid with Joanna Marsh
QLA002ThuAM	Graffiti Quilting with Karlee Porter
QLA002ThuPM	Graffiti Quilting with Karlee Porter
QLA002ThuEve	Graffiti Quilting with Karlee Porter
QLA003ThuPM	Ghost Shapes with Joanna Marsh
QLA003SatPM	Ghost Shapes with Joanna Marsh
QLA004	Feathers & Vines with Tia Curtis
QLA005FriAM	Free-Motion Fillers with Karlee Porter
QLA005FriPM	Free-Motion Fillers with Karlee Porter

QLA005FriEve	Free-Motion Fillers with Karlee Porter
QLA006FriAM	Gridwork Reimagined with Jodi Robinson
QLA006Sun	Gridwork Reimagined with Jodi Robinson
QLA007	Rulerwork Elevated with Jodi Robinson
QLA008SatAM	Modern Textures with Tia Curtis
QLA008SatPM	Modern Textures with Tia Curtis
QLA009SatEve	Feathers & Flourishes with Karlee Porter
QLA009Sun	Feathers & Flourishes with Karlee Porter
QP001	How to Make a Quilting Plan with Christa Watson
QP002SatPM	Quilting Strategy with Carolyn Friedlander
QP002SatEve	Quilting Strategy with Carolyn Friedlander

Special Events

LEAWA	Awards Ceremony
TOURThu	Special Exhibits Tour: Thursday
TOURFri	Special Exhibits Tour: Friday
TOURSat	Special Exhibits Tour: Saturday
TOURSun	Special Exhibits Tour: Sunday
YOThu	Daily Yoga: Thursday with Heidi Parkes
YOFri	Daily Yoga: Friday with Heidi Parkes
YOSat	Daily Yoga: Saturday with Heidi Parkes
YOSun	Daily Yoga: Sunday with Heidi Parkes

QUILTCON[®]

presented by THE MODERN QUILT GUILD

v.2
June 24, 2021

